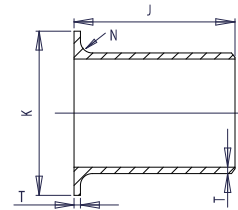


SCHEDULE STD

Pipe Size	Outside Diameter (Max.)	Outside Diameter (Min.)	Wall and Lap Thickness	Lap Diameter	Fillet Radius	Overall Length	Pipe Schedule Number	Approx. Weight in Pounds
			T	K	N	J		
1/2	0.896	0.809	0.109	1.38	0.12	3.00	40	0.30
3/4	1.106	1.019	0.113	1.69	0.12	3.00	40	0.40
1	1.376	1.284	0.133	2.00	0.12	4.00	40	0.75
1 1/4	1.716	1.629	0.140	2.50	0.19	4.00	40	1.10
1 1/2	1.965	1.869	0.145	2.88	0.25	4.00	40	1.25
2	2.456	2.344	0.154	3.62	0.31	6.00	40	2.25
2 1/2	2.966	2.844	0.203	4.12	0.31	6.00	40	3.50
3	3.596	3.469	0.216	5.00	0.38	6.00	40	4.75
3 1/2	4.096	3.969	0.226	5.50	0.38	6.00	40	6.00
4	4.593	4.469	0.237	6.19	0.44	6.00	40	7.25
5	5.683	5.532	0.258	7.31	0.44	8.00	40	12.00
6	6.743	6.594	0.280	8.50	0.50	8.00	40	16.00
8	8.743	8.594	0.322	10.62	0.50	8.00	40	23.00
10	10.913	10.719	0.365	12.75	0.50	10.00	40	36.00
12	12.913	12.719	0.375	15.00	0.50	10.00	*	47.00
14	14.170	13.969	0.375	16.25	0.50	12.00	30	35.40
16	16.180	15.969	0.375	18.50	0.50	12.00	30	44.80
18	18.190	17.969	0.375	21.00	0.50	12.00	*	57.20
20	20.240	19.969	0.375	23.00	0.50	12.00	20	71.00
24	24.240	23.969	0.375	27.25	0.50	12.00	20	102.00



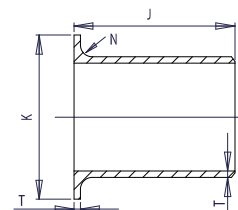
WELDBEND NOTES

1. Conforms to ASME B16.9 & ASTM A234 WPB.
 2. All dimensions are in inches.
 3. For bevel detail see page 107.
 4. For dimensional tolerances see page 108.
 5. All weights are in pounds and approximated or estimated.
- * This size and thickness does not correspond to any pipe schedule number.

FITTINGS

SCHEDULE XS

Pipe Size	Outside Diameter (Max.)	Outside Diameter (Min.)	Wall and Lap Thickness	Lap Diameter	Fillet Radius	Overall Length	Pipe Schedule Number	Approx. Weight in Pounds
			T	K	N	J		
1/2	0.896	0.809	0.147	1.38	0.12	3.00	80	0.38
3/4	1.106	1.019	0.154	1.69	0.12	3.00	80	0.51
1	1.376	1.284	0.179	2.00	0.12	4.00	80	1.00
1 1/4	1.716	1.629	0.191	2.50	0.19	4.00	80	1.25
1 1/2	1.965	1.869	0.200	2.88	0.25	4.00	80	1.75
2	2.456	2.344	0.218	3.62	0.31	6.00	80	3.00
2 1/2	2.966	2.844	0.276	4.12	0.31	6.00	80	4.50
3	3.596	3.469	0.300	5.00	0.38	6.00	80	6.50
3 1/2	4.096	3.969	0.318	5.50	0.38	6.00	80	7.75
4	4.593	4.469	0.337	6.19	0.44	6.00	80	9.50
5	5.683	5.532	0.375	7.31	0.44	8.00	80	17.00
6	6.743	6.594	0.432	8.50	0.50	8.00	80	23.00
8	8.743	8.594	0.500	10.62	0.50	8.00	80	32.00
10	10.913	10.719	0.500	12.75	0.50	10.00	60	53.00
12	12.913	12.719	0.500	15.00	0.50	10.00	*	62.00
14	14.170	13.969	0.500	16.25	0.50	12.00	*	89.00
16	16.180	15.969	0.500	18.50	0.50	12.00	40	96.00
18	18.190	17.969	0.500	21.00	0.50	12.00	*	112.00
20	20.240	19.969	0.500	23.00	0.50	12.00	30	125.00
24	24.240	23.969	0.500	27.25	0.50	12.00	*	151.00



WELDBEND NOTES

1. Conforms to ASME B16.9 & ASTM A234 WPB.
 2. All dimensions are in inches.
 3. For bevel detail see page 107.
 4. For dimensional tolerances see page 108.
 5. All weights are in pounds and approximated or estimated.
- * This size and thickness does not correspond to any pipe schedule number.