



2022 General Price List

Effective Date: January 2022

INDUSTRIAL PROCESS HIGH PERFORMANCE BALL VALVES AND VALVE AUTOMATION EQUIPMENT

Flo-Tite's General Price List includes most of our standard ball valves. In addition to all the listed items we offer many specials such as Metal Seated, V-Port Control Valves, Trunnion Design Valves of all sizes. Pressure class up to ANSI Class 2500. We welcome all your inquiries for Custom Design Ball Valves.

All Prices Are In US Dollars. Estimated Weights Are In lbs. ** = Item Number
C/F=Consult Factory. POA = Price On Application. N/A = Not Available

Flanged Valves

Full Flo Series Full Port ANSI Class 150 (2PC Body) Flanged End



Model / Size	1/2"	3/4"	1"	1 1/4"	1 1/2"	2"	2 1/2"
F150-SS	255	320	405	570	695	895	1560
F150-CS	225	270	325	425	505	685	1060
Est. Weight	4	5	7.5	9.5	15	21	34

Tech. Bulletin Page 58



Model / Size	3"	4"	5"	6"	8"	10"	12"
F150-SS	1675	2400	5725	6395	9535	16920	24985
F150-CS	1370	2155	3290	4340	6800	12315	19245
Est. Weight	42.5	64	C/F	142.5	298	441	717

Tech. Bulletin Page 58

Full Flo Series Full Port ANSI Class 300 (2PC Body) Flanged End



Model / Size	1/2"	3/4"	1"	1 1/4"	1 1/2"	2"	2 1/2"
F300-SS	325	415	560	795	895	1170	2285
F300-CS	255	325	415	615	670	945	1575
Est. Weight	5	7	10	13	19	24	42

Tech. Bulletin Page 58



Model / Size	3"	4"	5"	6"	8"	10"	12"
F300-SS	2680	3845	7415	8795	14360	23150	38565
F300-CS	1895	2535	5575	6075	10075	15695	25155
Est. Weight	61.5	97	C/F	225.5	380	564	860

Tech. Bulletin Page 58

Petro Series ANSI Class 600 Flanged End Floating Ball Design



Model / Size	2"	3"	4"	6"	8"	10"	12"
F600-SS	3650	7510	12650	16140	22630	30750	51945
F600-CS	2195	4850	7615	9455	14525	19590	32085
Est. Weight	38	75	140	363	38	38	38

Tech. Bulletin Page 69

Gear Operator Adder For Flanged Valves, All Above Models



Size	1/2"	3/4"	1"	1 1/4"	1 1/2"	2"	2 1/2"	3"	4"	6"	8"	10"	12"
Gear Only	660	660	660	660	660	660	700	700	700	1050	1050	1500	2270
Gear Mounted	885	885	885	885	885	885	1025	1025	1025	1550	1550	2250	3115

Tech. Bulletin Page 520-11

Graphoil Packing Adder for Fire Safe Valves, All Above Models

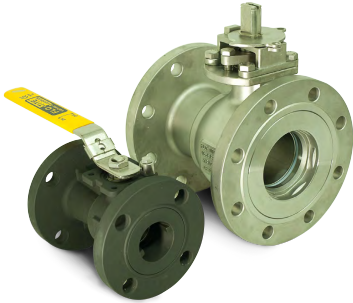
Size	1/2"	3/4"	1"	1 1/4"	1 1/2"	2"	2 1/2"	3"	4"	6"	8"	10"	12"
List Adder	32	32	47	53	63	63	68	68	74	131	147	210	504



API 6D Certified
Add 5% to Standard 150, 300, 600 Floating Ball Valves

2022

Standard Port 1PC Body Design/ANSI Class 150, Flanged End



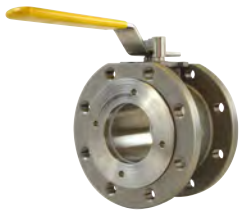
Model / Size	1"	1 1/2"	2"	2 1/2"
SF150-SS	360	555	845	C/F
SF150-CS	295	440	650	C/F
Est. Weight	C/F	10.5	18	C/F

Tech. Bulletin Page 58

Model / Size	3"	4"	6"	8"	10"	12"
SF150-SS	1435	2225	4785	8680	12910	21135
SF150-CS	1250	1670	2950	5230	9290	15805
Est. Weight	33	53.5	84	170.5	262	370

Tech. Bulletin Page 58

KOMPACT SERIES Wafer Type with Full Port 150 Flange Connection



Model / Size	3/4"	1"	1 1/2"
W150-SS	295	370	495
W150-CS	175	220	325
Est. Weight	4	6	9.5

DMW-150

Model / Size	2"	3"	4"	6"
DMW150-SS	880	1600	2425	5860
DMW150-CS	640	1120	1865	4440
Est. Weight	11	27	46	83

Tech. Bulletin Page 111

EZ SERIES - Unique Product Innovation

Reduced Port 2PC Bolted Body Design/ANSI Class 150 Flanged End



Model / Size	3"	4"	6"	8"	10"	12"
RF15-SS	1560	2280	4675	8460	14880	21135
RF15-CS	1215	1555	3005	5270	9260	15580
Est. Weight	33	53.5	82.5	186	279.5	426.5

RF15 Short Pattern

Tech. Bulletin Page 70

Reduced Port 2PC Bolted Body Design/ANSI Class 300 Flanged End



Model / Size	3"	4"	6"	8"	10"	12"
RF30-SS	2225	3340	6655	11430	C/F	C/F
RF30-CS	1560	2115	4230	5965	C/F	C/F
Est. Weight	53	83	140	C/F	C/F	C/F

RF30 Short Pattern

NEW! 300 lb

Tech. Bulletin Page 70



NEW!

-Sentinel Series - Segmented Ball Control Valves

3 & 4 Way Ball Valves

Multi-Port Trans-Flo Series

150LB Flanged End/Full Port, Prices are for T or L Ports



Model / Size	1/2"	3/4"	1"	1 1/2"	2"	2 1/2"
MPF15-SS	C/F	1000	1255	1900	2710	4275
MPF15-CS	C/F	910	1090	1700	2100	3175
Est. Weight	7	11.5	16	21	34.5	56

Tech. Bulletin Page 90

150LB Flanged End/Full Port, Prices are for T or L Ports



Model / Size	3"	4"	6"	8"	10"	12"
MPF15-SS	5085	6350	12360	23275	35805	63525
MPF15-CS	4080	5660	10435	19280	30050	53685
Est. Weight	69.5	125.5	238.5	389	639	809

Tech. Bulletin Page 90

Multi-Port Trans-Flo Series

300LB Flanged End/Full Port, Prices are for T or L Ports



Model / Size	3/4"	1"	1 1/2"	2"	3"	4"	6"	8"	10"	12"
MPF30-SS	1330	1855	2580	3685	6375	8775	16995	29515	45595	76995
MPF30-CS	1235	1690	2225	2775	5440	7710	13900	25395	34530	66825
Est. Weight	14.5	20.5	32	40.5	87.5	154.5	353	633	809	1098

C/F For Additional Sizes

Tech. Bulletin Page 90

Multi-Port Series Threaded End Standard Port / 800 WOG



Model / Size	1/4"-3/8"	1/2"	3/4"	1"	1 1/4"	1 1/2"	2"
MPT100SS - L	230	265	305	350	570	640	945
MPT100SS - T	250	285	315	390	595	680	920
Est. Weight	2	3	4	6.5	7	9	15.5

**If end cap change out is required add 5% to the list adder.*

Tech. Bulletin Page 100

Bottom Entry Series 3-Way Bottom Entry Flanged End, Class 150 C/F 300/600



Model / Size	2"	3"	4"	6"	8"	10"	12"
MPF155-SS	3210	5230	7940	9895	C/F	C/F	C/F
MPF155-CS	2265	3705	5305	6900	C/F	C/F	C/F
Est. Weight	23	48	73	110	C/F	C/F	C/F

Tech. Bulletin Page 96

Tri-Pro Bottom Entry Series - 3PC Diverter Valve

Full Port, NPT, SW or BW / 2250 WOG



Model / Size	1/2"	3/4"	1"	1 1/2"	2"	2 1/2"
3W-HPF50-SS	655	780	935	1840	3005	3405
3W-HPF40-CS	620	715	835	1670	2695	3170
Est. Weight	3.5	4.5	6	15	22	C/F

**If end cap change out is required add 5% to the list adder.*

Tech. Bulletin Page 90

3 Way NPT Brass Valves Are Available in Both L & T Ports, 1/4"-3", C/F

3 PC Valves

TRI-PRO Series - High Performance 3PC Valves

HPF TRI-PRO Series - Fire Safe-Full Port - 2250 WOG

Threaded End, Stainless Steel - HPF51-SS-1-FGG-L, Carbon HPF41-CS-1-FGG-L Socket Weld, Stainless - HPF52-SS-2-FGG-L, Carbon HPF42-CS-2-FGG-L Flanged ANSI 600, Stainless - HPF56-SS-6-FGG-L, Carbon HPF46-CS-6-FGG-L

****If end cap change out is required add 5% to the list adder.***



Model / Size	1/4"-3/8"	1/2"	3/4"	1"	1 1/4"	1 1/2"	2"	2 1/2"	3"	4"
HPF51SS	235	270	330	390	540	735	1020	2745	4480	6475
HPF52SS	265	340	395	495	605	860	1185	3380	4770	6735
HPF41CS	225	230	315	350	465	605	925	2570	3135	5320
HPF42CS	240	265	345	410	515	705	970	2945	3330	5415

Tri-Pro 3PC ANSI Class 600 Flanged End

HPF56SS	C/F	1465	1885	2190	2390	2695	3175	5655	6475	11000
HPF46CS	C/F	1150	1230	1435	1540	1640	1910	3785	4625	7540

Tech. Bulletin Page 51

Weight Lbs - Tri-Pro, Full Bore

Model / Size	1/4"-3/8"	1/2"	3/4"	1"	1 1/4"	1 1/2"	2"	2 1/2"	3"	4"
Threaded	2	2.5	3	5	7	11	16	32	59	116
Socket Weld	3	3	4	6	8	12	17	C/F	59	117
600 Flanged	N/A	5	9	12	C/F	24.5	31.5	C/F	92	132



HPS TRI-PRO Series - Reduced Port - 3000 / 2250

1/4" thru 1" Reduced Port Tri-Pro Series Valves are rated for 3000 WOG

Model / Size	1/4"-3/8"	1/2"	3/4"	1"	1 1/4"	1 1/2"	2"	2 1/2"	3"	4"
HPS51SS	See HPF Full Port	250	310	375	450	620	885	1260	2505	4320
HPS52SS		295	320	425	530	815	965	1330	3285	5475
HPS41CS		210	285	340	390	560	785	1100	2610	3840
HPS42CS		255	310	370	475	585	805	1205	2875	4060

****If end cap change out is required add 5% to the list adder.*** Tech. Bulletin Page 51



3PC Titan Series - ANSI Class 900/1500, NPT&SW 5000 WOG

Size 1/2 - 1 1/2" Full Bore Size 2" Standard Bore - 316SS or LCC

API 607-7



Model / Size	1/2"	3/4"	1"	1 1/2"	2"
1551-SS-NPT/SW	490	595	740	1865	1960
1541-LC-NPT/SW	430	515	640	1550	1675
1558-SS-FLANGEND	1305	1655	2175	4450	6395
1548-LC-FLANGEND	1120	1390	1615	3320	4590



****If end cap change out is required add 5% to the list adder.*** Tech. Bulletin Page 53

Multi-Choice - Sanitary Type 3PC Valves

Model S350-SL/S370-SL - 316L

350 Clamp End

Model S350-SS - 316SS

370 Extended Tube End

Model / Size	1/2"	3/4"	1"	1 1/2"	2"	2 1/2"	3"	4"
350 - SL	260	285	350	540	740	1840	2310	2705
370 - SL	295	305	395	575	835	2085	2705	3510
Est. Weight	2.4	3	4	7	10	20	30	55



Tech. Bulletin Page 55

3PC Ball Valve Designs

3PC Full Port Multi-Choice Series



300 / 200 Series - 1500 WOG

Model / Size	1/4"-3/8"	1/2"	3/4"	1"	1 1/4"	1 1/2"	2"	2 1/2"	3"	4"
300 - SS	135	155	180	230	280	430	600	955	1475	2450
200 - CS	125	130	160	200	250	350	485	850	1285	1940
Est. Weight	2	2	3	3.5	5.1	8	12	21.5	32	60.5

***If end cap change out is required add 5% to the list adder.**

Tech. Bulletin Page 45

300 / 200 Series - Weld-In-Place Design



Model / Size	1/4"-3/8"	1/2"	3/4"	1"	1 1/4"	1 1/2"	2"	2 1/2"	3"	4"
325 / 335- SS	245	265	295	335	420	560	765	1280	2020	3340
225 / 235 - CS	220	235	255	315	370	465	620	1210	1730	2465
Est. Weight	C/F	2	3	4	6	9	12	22	37	61

***If end cap change out is required add 5% to the list adder.**

Tech. Bulletin Page 46

3PC Full Port Economy Type

Econo-Chem Series ***If end cap change out is required add 5% to the list adder.**



Model 110-SS NPT/316 110-CS NPT/WCB
 1000 WOG 120-SS SW / 316 120-CS SW / WCB

Model / Size	1/2"	3/4"	1"	1 1/4"	1 1/2"	2"	2 1/2"	3"	4"
110 - SS	75	100	140	180	245	360	965	1185	1995
Est. Weight	1	2	3	5	8	15.5	26	27	49



Threaded Ball Valves

Fusion Series, S23

2000 WOG, Full Port, Fire Safe, Threaded Ends (Seal Weld Body)



Model / Size	1/4"-3/8"	1/2"	3/4"	1"	1 1/4"	1 1/2"	2"	2 1/2"	3"	4"
S23 - SS	90	105	125	170	240	325	475	805	1165	2430
S23 - CS	80	85	110	145	200	245	365	640	965	1895
Est. Weight	1	1	1	2	3	5	9	15	23	45

Tech. Bulletin Page 14

Fusion Series, T23 2000 WOG, Full Port, Threaded Ends - 2PC Body



Model / Size	1/4"-3/8"	1/2"	3/4"	1"	1 1/4"	1 1/2"	2"	2 1/2"	3"	4"
T23 - SS	75	80	105	140	195	295	445	725	1025	2345
T23 - CS	70	75	100	125	180	220	315	565	770	1650
Fire Safe Adder	3	3	4	5	7	10	15	24	34	72

Tech. Bulletin Page 14

FloTron Series, S3000 Threaded Ends / 3000 PSI | Full Port 1/4"-1 1/2" (Seal Weld Body)



Model / Size	1/4"-3/8"	1/2"	3/4"	1"	1 1/4"	1 1/2"	2"	2 1/2"	3"
S3000 - SS	150	180	235	395	500	770	765	C/F	2905
S3000 - CS	110	120	165	270	335	500	550	C/F	2130
Est. Weight	1	1	2	3.5	5.5	9	10	C/F	38

Tech. Bulletin Page 15

FloTron II Series, S6000 Threaded Ends / 6000 PSI | Full Port 1/4"-1 1/2" (Seal Weld Body)



Model / Size	1/2"	3/4"	1"	1 1/4"	1 1/2"	2" *
S6000 - SS	250	385	560	700	1140	1385
S6000 - CS	180	240	385	490	715	825
Est. Weight	1.5	2.76	3.9	7.4	9	10

Note:
Size 2"
standard
port

Tech. Bulletin Page 16



Economy Type Threaded End Ball Valves

1PC Econoflo Series, T45 Threaded Ends / 1000 WOG - Reduced Port

Model / Size	1/4"	3/8"	1/2"	3/4"	1"	1 1/4"	1 1/2"	2"
T45 - SS	35	40	45	55	70	100	120	155
T40-SS MxF	45	50	55	C/F	C/F	C/F	C/F	C/F

Tech. Bulletin Page 26

2PC Econoflo Series, T80 Threaded Ends / 1000 WOG - Full Port

Model / Size	1/4"-3/8"	1/2"	3/4"	1"	1 1/4"	1 1/2"	2"	2 1/2"	3"
T80 - SS	45	50	65	85	125	195	235	650	755

Tech. Bulletin Page 28

ECONOFLO SERIES

Threaded Ends - 2PC Direct Mount Full Port / 1000/2000 WOG



Model /Size	1/2"	3/4"	1"	1 1/4"	1 1/2"	2"	3"
DM85-SS	70	85	120	150	215	315	C/F
DM2000-SS	130	130	170	POA	325	450	1065

Tech. Bulletin Page 34

Flanged Ends Class 150 - 2PC Direct Mount Full Port



Model /Size	1/2"	3/4"	1"	1 1/2"	2"
DM F15SS	185	280	295	460	650
Est. Weight	4	5	6	12	16

Tech. Bulletin Page 36

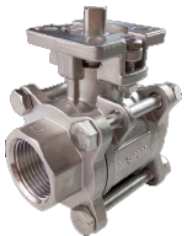
NPT/SW Ends - 3PC Direct Mount Full Port / 1000 WOG



Model /Size	1/2"	3/4"	1"	1 1/4"	1 1/2"	2"	2 1/2"	3"	4"
DM310SS (NPT)	150	160	180	280	355	465	1020	1510	2270
DM320SS (SW/BW)	160	170	190	295	360	485	1075	1560	2365
Est. Weight	1.5	2	3	-	6	8	-	-	-

Tech. Bulletin Page 35

DM 110/120 SS Series



Model / Size	1/2"	3/4"	1"	1 1/2"	2"
DM110 SS	180	200	260	570	785
DM120 SS	180	200	260	570	785
Est. Weight	2.84	2.93	3.68	8.93	12.79

New 3-Way Multiport 304 Stainless Steel

NPT Ends - Direct Mount DM-MPT100 Competitor Series



Model /Size	1/2"	3/4"	1"	1 1/4"	1 1/2"	2"
DM-MPT100S4	175	230	260	535	630	825
Est. Weight	1.4	1.7	2.5	5.2	8.2	10.6

316 Stainless		
Model /Size	2 1/2"	3"
DM-MPT100SS	1205	2100
Est. Weight	23.1	38.4

Tech. Bulletin Page 102

DM 51/52 BZ Series



Model / Size	1/4"	3/8"	1/2"	3/4"	1"	1 1/4"	1 1/2"	2"	2 1/2"	3"	4"
DM51 BZ	100	100	125	135	195	340	455	630	1300	1490	2630
DM52 BZ	165	165	165	200	260	370	525	800	C/F	C/F	C/F
Est. Weight	-	-	0.5	0.7	1.2	1.65	2.45	3.55	-	28.7	-

DMV2000/DMMPT200 SS Series



Model / Size	1/2"	3/4"	1"	1 1/4"	1 1/2"	2"
DM-MPT200 SS	195	205	290	430	625	880
DMV2000 SS	445	575	760	C/F	990	1235
Est. Weight	2.0	2.0	2.7	-	7.4	10.7

Close Out Specials

Call for Discounted Pricing

While Supplies Last

While Supplies Last

Economical Design Full Bore WCB or LCB with 304 Trim, ANSI 150 & 300, Flanged End

EC SERIES

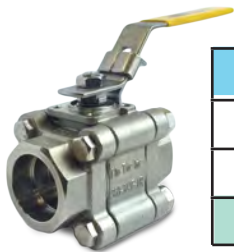


Model / Size	2"	2 1/2"	3"	4"	5"	6"	8"
F15-LC (LCB)	C/F	C/F	C/F	C/F	C/F	C/F	C/F
F30-LC (LCB)	C/F	C/F	C/F	C/F	C/F	C/F	C/F
F15 Est. Weight	23	30	38	62	104	232	120
F30 Est. Weight	28	C/F	56	92	72	212	198

Tech. Bulletin Page 67

New Fire Safe / PRO-MAX Series

Standard Port - 2000 WOG 1/2"-1 1/4" / 1500 WOG 1 1/2" -
 2" Model 361-SS NPT/316 361-CS NPT/WCB
 362-SS SW / 316 362-CS SW / WCB



Model / Size	1/2"	3/4"	1"	1 1/4"	1 1/2"	2"
361/362SS	135	150	190	275	345	455
361/362CS	110	125	150	225	275	360
Est. Weight	2	3	3	5	6	9

Tech. Bulletin Page 48

3PC Tri-Star Series - Fire Safe Design / Full Port

Model 510-SS NPT/316 410-CS NPT/WCB
 1500 WOG 520-SS SW/316 420-CS SW / WCB



Model /Size	1/2"	3/4"	1"	1 1/4"	1 1/2"	2"
500 - SS	95	120	165	240	310	455
400 - CS	75	95	120	170	230	345
Est. Weight	1	2	3	6.5	10	10

Tech. Bulletin Page 43

Grooved End Type

Model 190-SS 316



Model / Size	1 1/2"	2"	2 1/2"	3"	4"	6"
190-SS-9-RTT-L	235	330	690	1080	1915	C/F
Est. Weight	8	9	16	29	48	50

*If end cap change out is required add 5% to the list adder.

Tech. Bulletin Page 56

Commercial Series, T70-SS Threaded End - Standard Port - 2PC - 2000WOG



Model / Size	1/4"-3/8"	1/2"	3/4"	1"	1 1/4"	1 1/2"	2"	2 1/2"	3"
T70 - SS	70	75	90	115	140	205	285	POA	POA
Est. Weight	.68	.70	1.36	1.67	3.15 - 5.81				

Tech. Bulletin Page 30

Omni Series, T12 Threaded Ends - Fire Safe - Reduced Bore / 2000 PSI



Model /Size	1/4"-1/2"	3/4"	1"	1 1/4"	1 1/2"	2"
T12 - SS	85	110	130	165	210	300
T12 - CS	70	80	95	130	165	230
Est. Weight	0.4	0.6	1	2	3	4

Tech. Bulletin Page 23

(RK) Repair Kits - Replacement Soft Parts

SIZE	Super-Tek TFM	S-Tek 50/50	UHMWPE	RPTFE PTFE	Super-Tek III	Installation List Adder
	Seat Codes					
	F	S	U	R T	Y	
1/4"-3/8"	65	85	70	70	70	75
1/2"	70	95	85	70	80	75
3/4"	70	120	90	75	85	75
1"	120	140	110	95	115	85
1 1/4"	150	210	125	110	185	85
1 1/2"	200	290	155	125	265	90
2"	225	355	210	155	270	90
2 1/2"	385	500	285	255	490	150
3"	410	700	450	405	635	200
4"	535	815	575	525	765	200
6"	825	1255	855	815	2025	200
8"	965	1470	965	1015	2540	200
10"	1325	2300	1330	1345	3505	250
12"	3680	5335	2415	3745	5760	250

This Price Includes:
Installed Repair Kits Soft Parts Change-Outs Includes Labor/ Testing Price Adder to RK List

Repair Kits include Applicable Seats, Body Seals, Stem Packing & Thrust Washers as Required for Standard Valves.

Cavity Filler Adder for 3PC 300/200 Series (PTFE)

Consult Factory for Flanged Valve Cavity Filler

Size	1/2"	3/4"	1"	1 1/4"	1 1/2"	2"	2 1/2"	3"	4"	6"	8"	10"
Price	175	175	175	275	315	425	865	1055	2100	C/F	C/F	C/F



Flo-Tite Offers A Wide Selection of Control Type Ball Valves



Valve Automation



All Automation Equipment pricing includes mounting hardware for all Flo-Tite valves and actuators. All units are assembled and tested. Note: Size 1/4"-2". Actuator mounting kits are 304 SS as standard. All actuators are supplied with 12 springs as standard.

Actuator Reverse Springs / Remove Springs

Actuator Size	Spring Removal	Reversing Pistons	Changing Seals
52 to 140	50	100	215
160 to 240	100	145	300
270 to 400	150	195	400



*Direct Mounted Valves - Subtract 5% from List Price

Flo-Tite AirCon Rack and Pinion Pneumatic Actuators*

DOUBLE ACTING /MOUNTED									SPRING RETURN/MOUNTED								
MODEL	WEIGHT (LBS)	LIST	MODEL	WEIGHT (LBS)	LIST	MODEL	WEIGHT (LBS)	LIST	MODEL	WEIGHT (LBS)	LIST	MODEL	WEIGHT (LBS)	LIST	MODEL	WEIGHT (LBS)	LIST
DA32	1.2	285	DA92	9	675	DA210	86	3720	SR52	3	385	SR125	22	1325	SR270	216	7590
DA40	2	315	DA105	12	945	DA240	104	4665	SR63	4	485	SR140	29	2145	SR300	275	10365
DA52	3	355	DA125	20	1160	DA270	168	6915	SR75	6	555	SR160	44	2535	SR350	440	15995
DA63	4.6	460	DA140	29	1505	DA300	214	8665	SR83	7	645	SR190	78	3835	SR400	637	24020
DA75	5.8	515	DA160	46	2115	DA350	332	14095	SR92	12	735	SR210	85	4685	Larger Sizes are available in our extended range series		
DA83	7.1	555	DA190	72	3395	DA400	540	20580	SR105	14	990	SR240	135	6145			
DOUBLE ACTING ACTUATOR ONLY									SPRING RETURN ACTUATOR ONLY								
MODEL	WEIGHT (LBS)	LIST	MODEL	WEIGHT (LBS)	LIST	MODEL	WEIGHT (LBS)	LIST	MODEL	WEIGHT (LBS)	LIST	MODEL	WEIGHT (LBS)	LIST	MODEL	WEIGHT (LBS)	LIST
DA32	1.2	170	DA92	9	505	DA210	86	3085	SR52	3	255	SR125	22	975	SR270	216	6655
DA40	2	200	DA105	12	600	DA240	104	4030	SR63	4	315	SR140	29	1795	SR300	275	9430
DA52	3	225	DA125	20	810	DA270	168	5980	SR75	6	385	SR160	44	2025	SR350	440	15060
DA63	4.6	290	DA140	29	1155	DA300	214	7730	SR83	7	475	SR190	78	3200	SR400	637	20645
DA75	5.8	345	DA160	46	1605	DA350	332	13160	SR92	12	565	SR210	85	4050	Larger Sizes are available in our extended range series		
DA83	7.1	385	DA190	72	2760	DA400	540	17205	SR105	14	645	SR240	135	5510			

Integral Mounted Solenoid Valves

MODEL	PRICE
SVS4 (NEMA4)	180
SVS7 (NEMA7)	350

(Mounts directly to Actuator Air Inlet Manifold)



Filter Regulator	Plastic 230 Metal 725
Air Set	300
Speed Control	60



Limit Switches

MODEL NUMBER	NOTE	PRICE Switch only	PRICE Mounted
FMYB-5120 NEMA 4	With Visual Indicator	555	680
AMYB-5120 NEMA 7	With Visual Indicator	715	885
FFNB-5120 NEMA 4	Without Visual Indicator	555	735
210 ALS COMPACT SERIES	NEMA-4/with Indicator	200	240
310 ALS-II (Standard Box)	NEMA-4/with	285	325
FMFB5120 NEMA 4	3-Way Visual Indicator T-Port	670	800
AMFB5120 NEMA 7	3-Way Visual Indicator T-Port	820	945
AMYB5T20 NEMA7	1A Non-Contact SW	1020	1145

Flo-Tite Positioners

MODEL	TYPE*	PRICE Position only	PRICE Mounted
VP700-G	Pneumatic 3-15 psi	1375	1705
VE700-G	Electro Pneumatic 4-20 mA	2750	3080
VAC-400	Digital Positioner 4-20 mA	6125	6455
YT1000RDN535S00	Electro Pneumatic 4-20 mA	2075	2270
YT3300RSA5521S	Digital Positioner 4-20 mA	3065	3260
YT3400RDA5521S	Electro Pneumatic 4-20 mA	3650	3845



Limit Switches



Positioners



Industrial Process Electric Actuators

On - Off Models

Modulating Models

F=24vac/vdc

Model	Actuator Only List	Mounted List	Weight	Torque in-lbs
ELONC3H0	875	1,135	2.2	266
F=24vac/vdc				
ELONA4F0	1,245	1,505	6.6	310
ELONR6F0	1,625	1,890	6.6	440
ELONA8F0	2,910	3,380	24.5	880
ELONB9F0	3,520	3,985	24.5	1770
ELONA10F0	4,935	5,405	49	3540
ELONC12F0	5,675	6,400	49	7080
K=120vac				
ELONA4K0	855	1,115	6.6	310
ELONR6K0	1,470	1,735	6.6	440
ELONA8K0	2,505	2,975	24.5	880
ELONB9K0	2,960	3,430	24.5	1770
ELONA10K0	4,285	4,755	49	3540
ELONB11K0	4,750	5,470	49	5310
ELONC12K0	5,110	5,830	49	7080
ELOND13K0	5,860	6,585	49	8850
ELONE14K0	9,510	10,230	80	15045
L=230vac				
ELONA4L0	905	1,165	6.6	310



Model	Actuator Only List	Mounted List	Weight	Torque in-lbs
ELONA4F8	2,720	2,985	13.8	310
ELONR6F8	3,195	3,455	13.8	440
ELONA8F8	4,590	5,060	24.5	880
ELONA10F8	7,180	7,650	49	3540
K=120vac				
ELONA4K8	2,450	2,715	6.8	310
ELONR6K8	3,135	3,395	6.8	440
ELONS7K8	3,470	3,735	6.8	440
ELONA8K8	4,295	4,765	24.5	880
ELONB9K8	4,960	5,430	24.5	1770
ELONA10K8	6,760	7,230	49	3540
ELOND13K8	9,325	10,045	49	8850

Specifications: Nema4/4X Enclosure, Manual Override & Heater, 2 Auxiliary Switches, Direct Mount Capable On Our ISO5211 Valves 110 VAC / 220 VAC Or 24 VDC / 24 VAC All Electric Actuator Prices Include Actuator Mounting and Testing

- All Electric Actuators listed are 120 volt
- Please consult factory for 220 VAC or 24 VDC/24 VAC
- All Electric Actuator Prices Include Actuator Mounting and Testing

Specifications:

- Nema 4/4x Enclosure
- Manual Override & Heater
- Direct Mount Capable on our ISO 5211 Valves

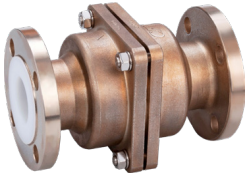
Eccentric Control Valves are also available.



PFA Lined Ball Valves

Model/Size	½"	¾"	1"	1 1/2"	2"	2 1/2"	3"	4"	6"
F15-DI-FAA-L	1390	1500	1705	2275	2370	5075	6245	8520	19880
Est Weight	2.5	2.87	4.46	C/F	11.03	C/F	21.05	32.81	67.35

Lined Ball Valve DI



PFA Lined Ball Check Valves

Model/Size	½"	¾"	1"	1½"	2"	2 1/2"	3"	4"
BCV15-SS-TT	2605	2680	2895	4005	5555	8325	12235	19035
Est Weight	2.81	3.13	4.55	7.58	11.59	37.50	24.86	37.50

Lined Ball Check Valve SS

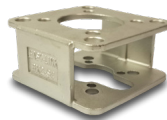


Couplers

Model	Square Size in/mm	DD Slot Size	List Price	
			Open End	Encapsulated
050A	0.43/11	0.25	46	50
050I	0.43/11	0.20	46	50
050II	0.43/11	0.24	46	50
063A	0.55/14	0.25	46	50
063I	0.55/14	0.20	46	50
063II	0.55/14	0.24	46	50
050B	0.43/11	0.315	46	50
050BT	0.43/11	0.31	46	50
063B	0.55/14	0.315	46	50
063BT	0.55/14	0.31	46	50
063C	0.55/14	0.375	46	50
063MP-SQ	0.55/14 (MPT)	0.43	46	50
075A	0.67/17	0.25	51	58
075B	0.67/17	0.315	51	58
075C	0.67/17	0.375	55	62
075D	0.67/17	0.67	55	62
075DM	0.67/17	0.67	55	62
100C	0.86/22	0.375	55	62
100D	0.86/22	0.67	129	146
100D-SQ	0.86/22 (MPT)	0.67	129	146
100DH	0.86/22	0.67	129	146
100DM	0.86/22	0.67	129	146
100MP-SQ	0.86/22 (MPT)	0.55	129	146
125C	1.06/27	0.375	129	146
125D	1.06/27	0.67	129	146
125DH	1.06/27	0.067	129	146
125G	1.06/27	0.091	142	154
200D	1.417/36	0.067	154	175
200E	1.417/36	1.024	154	175
210G	1.417/36	0.91	154	175
270EL	1.81/46	1.024	176	200
270ES	1.81/46	1.024	176	200
270F	1.81/46	1.38	188	212

Brackets

Model	Size	List Price
BKO-SS	¼"-½"	45
BK1-S4	½"-1¼"	50
BK2-S4	1½"-2"	66
BK2-CS	1½"-2"	62
BK2.5S4	1½"-2"	98
BK3-S4	2½"-6"	121
BK3-CS	2½"-6"	101
BK3H-S4	6"-8"	166
BK3H-CS	6"-8"	130
BK4-CS	8"-12"	242
BK5-CS	3"-6" D/G	242
BK6-CS	FOR/BFV	235
BK7-CS	FOR 6"-10"	235
BK10-CS	FOR 8"-10"	235
LS5-CS	POS	46
LS4-A	½"-¾"	268
LS4-B	1"-1¼"	296
LS4-C	1½"-2"	318
LS7-M	2½"-4"	342



AirCon Automator Series Diaphragm Actuators



Model	List Price	Weight	Model	List Price	Weight
SRD-2A-MI-FS-MN-T2	1682	46	SRD-3A-MI-FS-MN-T2	2080	73
SRD-2B1-MI-FS-MN-T2	1682	46	SRD-3B1-MI-FS-MN-T2	2196	73
SRB-2B2-MI-FS-MN-T2	1738	46	SRD-3B2-MI-FS-MN-T2	2262	73
SRB-2C-MI-FS-MN-T2	1738	46	SRD-3C-MI-FS-MN-T2	2300	73
SRD-2D-MI-FS-MN-T2	1868	46	SRD-3D-MI-FS-MN-T2	2352	73
Model	List Price	Weight	Model	List Price	Weight
SRD-4B1-MI-FS-MN-T2	3463	134	SRD-5B1-MI-FS-MN-T2	5604	236
SRD-4B2-MI-FS-MN-T2	3515	134	SRD-5B2-MI-FS-MN-T2	5687	236
SRD-4C-MI-FS-MN-T2	3568	134	SRD-5C-MI-FS-MN-T2	6000	236
SRD-4D-MI-FS-MN-T2	3687	134	SRD-5D-MI-FS-MN-T2	6404	236

AirCon Kompact Double Acting and Spring Return



Model Kompact-4 Double Acting	List Price	Weight	Model Kompact-4 Spring Return	List Price	Weight
15DA	325	2	15SR	366	2
20DA	394	3	20SR	456	4
25DA	518	6	25SR	624	8
30DA	726	10	30SR	818	11
35DA	1092	16	35SR	1240	20
45DA	1675	24	45SR	1898	33
60DA	2924	57	60SR	3576	77
75DA	5835	112	75SR	6820	141

Nickel Infused Pneumatic Actuators

Double Acting	List Price Actuator Only	List Price Mounted	Weight	Spring Return	List Price Actuator Only	List Price Mounted	Weight
DA052NI	370	465	3	SR052.12-NI	405	500	3
DA063NI	435	570	4.6	SR063.12-NI	475	610	4
DA075NI	545	680	5.8	SR075.12-NI	605	740	6
DA083NI	665	800	7.1	SR083.12-NI	710	845	7
DA092NI	720	855	9	SR092.12-NI	795	930	12
DA105NI	825	1105	12	SR105.12-NI	945	1225	14
DA125NI	1195	1480	20	SR125.12-NI	1375	1660	22
DA140NI	1635	1920	29	SR140.12-NI	1860	2145	29
DA160NI	2460	2845	46	SR160.12-NI	2785	3170	44
DA190NI	3640	4155	72	SR190.12-NI	4230	4745	78
DA210NI	4105	4620	86	SR210.12-NI	4735	5250	85
DA240NI	6400	6900	104	SR240.12-NI	7050	7550	135
DA270NI	7570	8230	168	SR270.12-NI	8695	9355	216

Flo-Tite also offers:
AirMax Cylinder Series



Series XB Extended Range Series

Power Stroke Scotch-Yoke Series





Standard Terms & Conditions of Sale

1. GENERAL

- A. Written quotations are firm for a period of thirty days after date of quotation unless cancelled by Flo-Tite in writing prior to acceptance by the purchaser. Verbal quotations are subject to acceptance within 48 hours, unless within that period they are confirmed in writing by Flo-Tite. Stenographic and clerical errors are subject to correction.
- B. Contracts or orders having penalty clauses for failure to meet shipment are not acceptable unless specifically approved in writing by an authorized individual at our office in Lumberton, N.C.
- C. Shipment lead times are based on conditions at the time of quoting. Goods are subject to prior sales. Lead time may change for causes beyond Flo-Tite's control. Under no circumstance will the seller be liable for consequential or liquidated damages due to failure to fulfill estimated shipping lead times.
- D. Flo-Tite reserves the right to alter dimensions without notice. Please request certified drawings to confirm dimensions if necessary.

2. PRICES

List prices and discount schedules of all Flo-Tite products are subject to change without notice. All orders released for immediate shipment will be invoiced at the prices in effect at the time the order is received at Flo-Tite's Manufacturing Plant in Lumberton, N.C. Any order whose shipment is delayed per the customer's request in excess of 120 days will be invoiced at the published prices and discounts effective at shipment time or at the price agreed upon at time of order acceptance by Flo-Tite.

3. CHANGE ORDERS OR CANCELLATION:

Orders received and accepted by Flo-Tite may not be changed or cancelled except on terms satisfactory to Flo-Tite and which prevent Flo-Tite from incurring any loss. Changes or cancellations of products considered non-standard or special will not be accepted without full reimbursement of all related expenses incurred to date. All cancellations and change orders must be made in writing to and approved by Flo-Tite, subject to appropriate charges to Purchaser. Special terms may apply for orders requiring large quantities or valves of non-standard materials of construction. Buyers signed acceptance of these terms is required prior to Flo-Tite releasing the order. All shipments are F.O.B. Factory, Lumberton, NC USA

4. TERMS:

Net 30 day terms are for approved customers only. Others shall be specified by Flo-Tite. International customer terms shall be cash in advance, credit card or wire transfer upon notice of readiness to ship. Accounts past due 60 days or more are subject to 1% service charge per month with a maximum of 12% per annum. We gladly accept credit cards as a form of payment. However, a 3.5% processing fee will be charged.

5. FREIGHT:

All shipments are F.O.B. Factory, Lumberton, NC USA

6. RETURNS:

All requests for return must be made in writing within 10 days after receipt of goods. No materials may be returned to the factory without written permission being given by an authorized individual at Flo-Tite's office in Lumberton, N.C. A copy of the seller's authorization for return (RMA) must be attached to the returned material. Safety Data Sheets must accompany returns on products that were in service. Returns without an RMA and SDS sheets will be rejected.

7. MINIMUM BILLING

MINIMUM BILLING FOR ANY ORDER WILL BE \$50.00

8. Governing Law

Purchase orders accepted by Flo-Tite shall be governed and construed in accordance with the laws of the State of North Carolina and the parties hereby submit to the exclusive jurisdiction of the North Carolina courts.

WARRANTY

Flo-Tite provides the following warranty regarding products manufactured by it. THE WARRANTY STATED HEREIN IS EXPRESSLY IN LIEU OF ALL OTHER WARRANTIES AND REPRESENTATIONS, EXPRESSED OR IMPLIED, OR STATUTORY, INCLUDING, WITHOUT LIMITATION, THE IMPLIED WARRANTY OF MERCHANTABILITY OR THE IMPLIED WARRANTY OF FITNESS FOR A PARTICULAR PURPOSE. Flo-Tite warrants its products to be free from defects in materials and workmanship when these products are used for the purpose for which they were designed and manufactured. Flo-Tite does not warrant its products against chemical or stress corrosion or against any other failure other than from defects in materials or workmanship. The warranty period is for twelve (12) months from installation date or eighteen (18) months from shipment date, whichever date comes first. Any claim regarding this warranty must be in writing and received by Flo-Tite before the last effective date of the warranty period.

Upon Flo-Tite's receipt of a warranty claim, Flo-Tite reserves the right to inspect the product(s) in question at either the field location or at Flo-Tite's Manufacturing Plant. If, after inspection of the product(s) in question, Flo-Tite determines that the purchaser's claim is covered by this warranty, Flo-Tite's sole liability and the purchaser's sole remedy under this warranty is limited to the repair or replacement thereof at Flo-Tite's option. Flo-Tite will not be liable for any repairs, labor, material or other expenses that are not specifically authorized in writing by Flo-Tite, and in no event shall Flo-Tite be liable for any direct liquidated or consequential damages arising out of any defect from any cause whatsoever. If any Flo-Tite product is modified or altered at any location other than Flo-Tite's Lumberton, N.C. Manufacturing Plant without the express written authorization of Flo-Tite, then this warranty is null and void. Any products sold by Flo-Tite but manufactured by companies other than Flo-Tite are not covered by this warranty. The warranty for such products shall be subject only to the warranty relief, if any, provided by the suppliers and/or manufacturers of such products.



www.flotite.com



Flo-Tite, Inc.
4815 West 5th St.
Lumberton, NC 28358

P. O. Box 1293 Lumberton, NC 28359

Tel: (910) 738-8904
Fax: (910) 738-9112