



Valves, Automation & Controls **3000# SEAL WELD BALL VALVE**

**Design Features**

- 3000 CWP
- Carbon Steel ASTM A216 WCB or 316 Stainless Steel ASTM A351 CF8M
- Threaded Ends with Delrin Seats and PTFE Seals or Socket Weld Ends with PEEK Seats and Graphite Seals
- Live Loaded, Blow-Out Proof Stem
- Anti-Static Device
- Mounting Pad
- Lockable Lever Handle

**Applicable Standards**

- Mounting Dimensions (1/2" - 2") ISO 5211
- Socket Weld and Threaded Ends ASME B16.11
- Shell and Seat Pressure Test ASME B16.34
- NACE MR-0175 2002



USA 800-766-0076

Fax 323-890-4456

www.smithcooper.com

www.sharpevalves.com

Los Angeles, CA

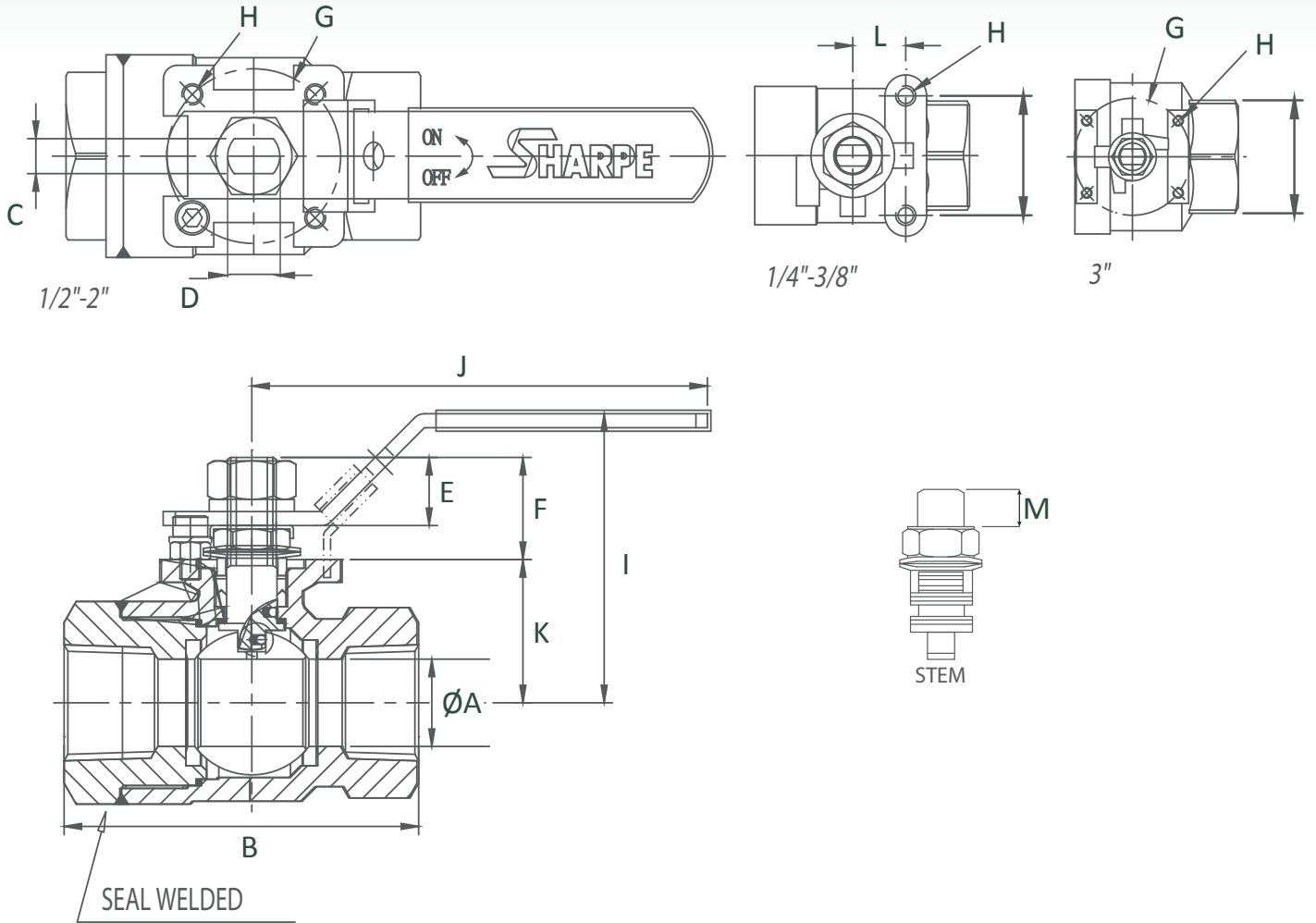
Chicago, IL

Atlanta, GA

Vancouver, WA

Houston, TX

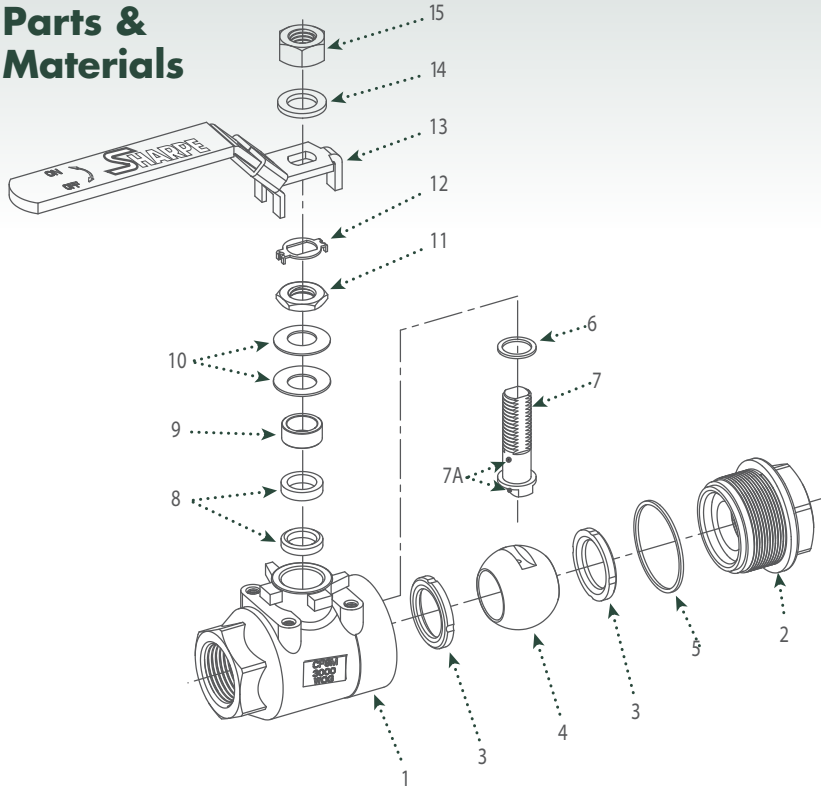
## Dimensions



Dimensions (Inches)

Size	ØA	B	C	D	E	F	G	H	I	J	K	L	M
1/4	0.37	2.52	0.20	0.31	0.31	0.57	-	M5	2.19	3.70	0.94	0.93	0.31
3/8	0.37	2.52	0.20	0.31	0.31	0.57	-	M5	2.19	3.70	0.94	0.93	0.31
1/2	0.49	2.83	0.20	0.31	0.31	0.54	F03 (1.42)	M5	2.17	5.31	0.96	0.96	0.29
3/4	0.79	3.50	0.33	0.47	0.42	0.73	F04 (1.65)	M5	2.62	6.50	1.32	1.32	0.41
1	0.98	4.02	0.39	0.55	0.77	1.14	F05 (1.97)	M6	3.25	6.89	1.61	1.61	0.75
1-1/4	1.26	4.57	0.39	0.55	0.83	1.20	F05 (1.97)	M6	3.44	6.89	1.79	1.79	0.79
1-1/2	1.50	4.88	0.47	0.75	1.18	1.36	F07 (2.76)	M8	4.61	9.57	2.39	2.39	1.06
2	1.50	5.51	0.47	0.75	1.18	1.36	F07 (2.76)	M8	4.61	9.57	2.39	2.39	1.06
3	3.15	8.07	0.63	0.98	1.34	2.58	F10 (4.02)	M10	6.04	14.57	3.31	3.96	1.34

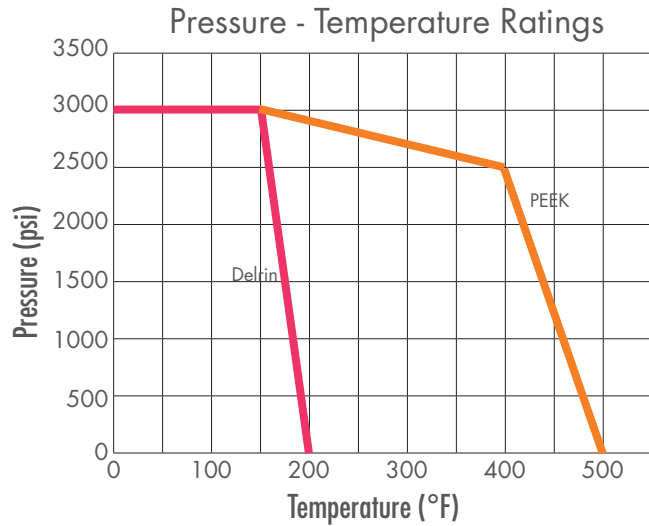
## Parts & Materials



No.	Part Name	Material	Qty
1	Body	Carbon Steel ASTM A216 WCB or 316 Stainless Steel ASTM A351 CF8M	1
2	End Piece	Carbon Steel ASTM A216 WCB or 316 Stainless Steel ASTM A351 CF8M	1
3	Seat	Delrin (TE) / PEEK (SW)	2
4	Ball	316 Stainless Steel ASTM A351 CF8M	1
5	Body Seal	PTFE (TE) / Graphite (SW)	1
6	Thrust Bearing	PTFE (TE) / PEEK (SW)	1
7	Stem	17-4PH	1
7A	Anti-Static Device	316 Stainless Steel ASTM A276	2
8	Stem Packing	PTFE / Graphite	1
9	Gland Packing	300 Series Stainless Steel	1
10	Belleville Washer	300 Series Stainless Steel	2
11	Packing Nut	300 Series Stainless Steel	1
12	Lock Tab	300 Series Stainless Steel	1
13	Handle	300 Series Stainless Steel	1
14	Lock Washer	300 Series Stainless Steel	1
15	Handle Nut	300 Series Stainless Steel	1
16	Handle Sleeve	PVC	1

## Technical Information

Size	C <sub>v</sub>	Weight (lbs.)
1/4	7	0.88
3/8	8	0.84
1/2	10	1.06
3/4	35	2.14
1	68	3.66
1-1/4	110	5.38
1-1/2	155	8.86
2	155	10.14
3	750	37



## How To Order

Size	Series	Body	Stem	Seat	Seal	End
1/4	50C7	4 Carbon Steel	7 17-4PH	D Delrin	T PTFE	TE Threaded
3/8		6 Stainless Steel		P Peek	G Graphite	SW Socket
1/2						
3/4						
1						
1-1/4						
1-1/2						
2						
3						

Example: 1/4 + 50C7 + 6 + 7 + P + G + SW = 1/4"-50C7-6-7-P GSW