

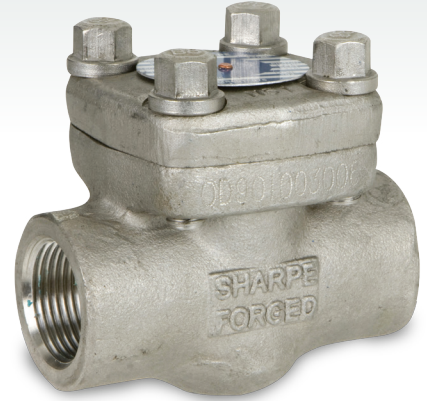


Series 24834SC & 24836SC
 FORGED SWING CHECK VALVE

Valves, Automation & Controls

Design Features

- Class 800
- Socket weld ends forged steel or 316L stainless steel
- Threaded ends forged steel or 316L stainless steel
- Bolted bonnet
- NACE MR-0175



Applicable Standards

- Basic Design API 602 (9th Edition)
- Socket Weld ANSI 16.11
- Threaded ANSI B1.20.1
- Test API 598



Technical Information

| Size | Cv | Weight (lbs.) |
|-------|----|---------------|
| 1/4 | 5 | 3.6 |
| 3/8 | 6 | 3.3 |
| 1/2 | 9 | 3.3 |
| 3/4 | 10 | 3.8 |
| 1 | 22 | 5.6 |
| 1-1/4 | 55 | 7.9 |
| 1-1/2 | 55 | 9.3 |
| 2 | 82 | 16.1 |

| Temperature °F | 316L Pressure psi | Forged Steel Pressure psi |
|----------------|-------------------|---------------------------|
| -20 to 100 | 1600 | 1975 |
| 200 | 1365 | 1810 |
| 300 | 1215 | 1745 |
| 400 | 1120 | 1690 |
| 500 | 1050 | 1610 |
| 600 | 990 | 1515 |
| 650 | 975 | 1465 |
| 700 | 960 | 1415 |
| 750 | 940 | 1350 |
| 800 | 920 | 1100 |
| 850 | 900 | - |

USA 800-766-0076

Fax 323-890-4456

www.smithcooper.com

www.sharpevalves.com

Los Angeles, CA

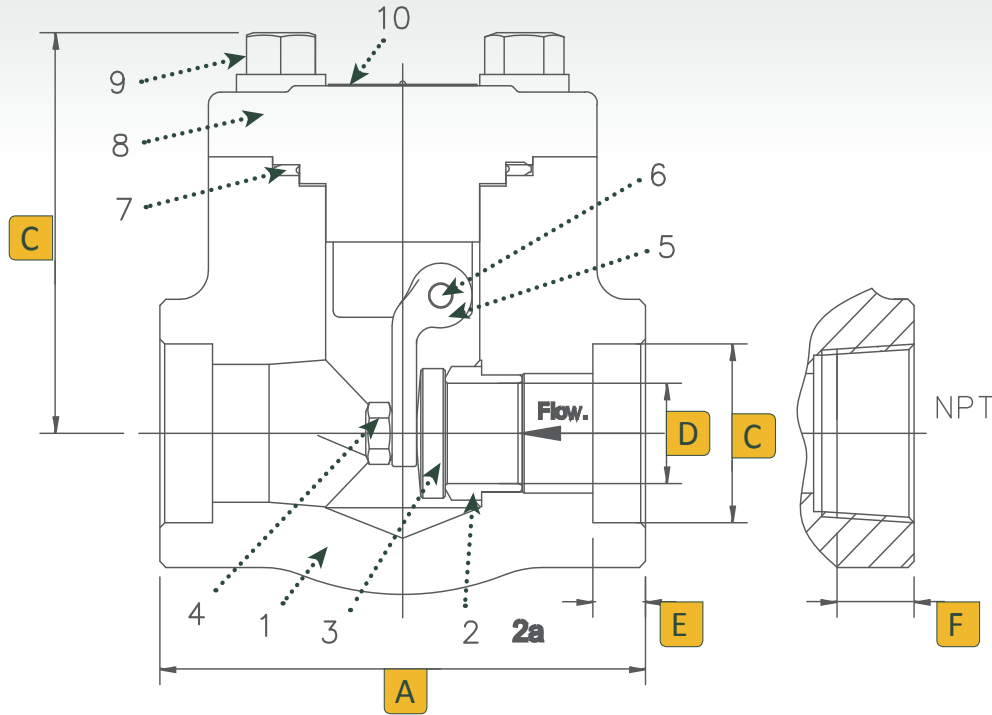
Chicago, IL

Atlanta, GA

Vancouver, WA

Houston, TX

Dimensions, Parts & Materials



Dimensions (Inches)

| Size | A | B | C | D | E | F |
|-------|------|------|------|------|------|------|
| 1/4 | 3.11 | 2.40 | 0.55 | 0.24 | 0.39 | 0.40 |
| 3/8 | 3.11 | 2.40 | 0.69 | 0.39 | 0.39 | 0.43 |
| 1/2 | 3.11 | 2.40 | 0.85 | 0.51 | 0.39 | 0.53 |
| 3/4 | 3.62 | 2.40 | 1.07 | 0.51 | 0.51 | 0.55 |
| 1 | 4.37 | 3.07 | 1.33 | 0.71 | 0.51 | 0.69 |
| 1-1/4 | 4.72 | 3.35 | 1.68 | 0.94 | 0.51 | 0.71 |
| 1-1/2 | 4.72 | 3.80 | 1.92 | 1.14 | 0.51 | 0.72 |
| 2 | 5.51 | 4.55 | 2.40 | 1.44 | 0.63 | 0.76 |

| No. | Part Name | Qty | Material |
|-----|------------|-----|--|
| 1 | Body | 1 | 316L Stainless Steel ASTM A182 or Forged Steel ASTM A105N* |
| 2 | Seat Ring | 1 | 316 Stainless Steel or 410 Stainless Steel* |
| 2A | Seat | 1 | Stellite |
| 3 | Disc | 1 | 316 Stainless Steel or 410 Stainless Steel* |
| 4 | Nut | 1 | 8M Steel ASTM A194 or 2HM Steel ASTM A194* |
| 5 | Swing Arm | 1 | 316 Stainless Steel or 410 Stainless Steel* |
| 6 | Dowel | 1 | 316 Stainless Steel or 410 Stainless Steel* |
| 7 | Gasket | 1 | 316 + Graphite or 304 + Graphite* |
| 8 | Cover | 1 | 316L Stainless Steel or Carbon Steel ASTM A105N* |
| 9 | Body Bolt | 1 | B8M Steel ASTM A193 or B7M Steel ASTM A193* |
| 10 | Name Plate | 1 | Aluminum |

* Used on Forged Steel Valves

How to Order

| Size | Series / Body | Ends |
|-------|-----------------------------------|----------------|
| 1/4 | 24834SC Forged Steel (Trim 8) | TE Threaded |
| 3/8 | 24836SC Stainless Steel (Trim 12) | SW Socket Weld |
| 1/2 | | |
| 3/4 | | |
| 1 | | |
| 1-1/4 | | |
| 1-1/2 | | |
| 2 | | |

Example: 1 - 24834SC - TE = 1-24834SC-TE

Due to continuous development of our product range, we reserve the right to change the dimensions and information for this product as required.