



Valves, Automation & Controls

Series 12 DIR-ACT™
DIRECT MOUNT
2-PIECE BALL VALVE

Design Features

- Full Port
- 1500 CWP**, 150 WSP*
- Carbon Steel ASTM A216 WCB or 316 Stainless Steel ASTM A351 CF8M
- Threaded End Connections
- Direct Mount Pad Eliminates Need for Brackets and Couplings*
- Low Profile, Space Saving Design
- Live Loaded, Blow-Out Proof, Stem
- Patented System Allows Adjustment of Stem Packing Nut With Actuator In Place (U.S. Patent No. 6,446,935 B1)
- Lockable, Reversible, Lever Handle

Applicable Standards

- | | |
|--------------------------------|-------------|
| • Mounting Dimensions | ISO 5211 |
| • Threaded Ends | ASME B16.11 |
| • Shell and Seat Pressure Test | ASME B16.34 |

Options

- 4X4 Pneumatic Four Piston Actuator
- SPN II Pneumatic Two Piston Actuator
- SEA Electric Actuator
- Solenoids
- Limit Switches



USA 800-766-0076

Fax 323-890-4456

www.smithcooper.com

www.sharpevalves.com

Los Angeles, CA

Chicago, IL

Atlanta, GA

Vancouver, WA

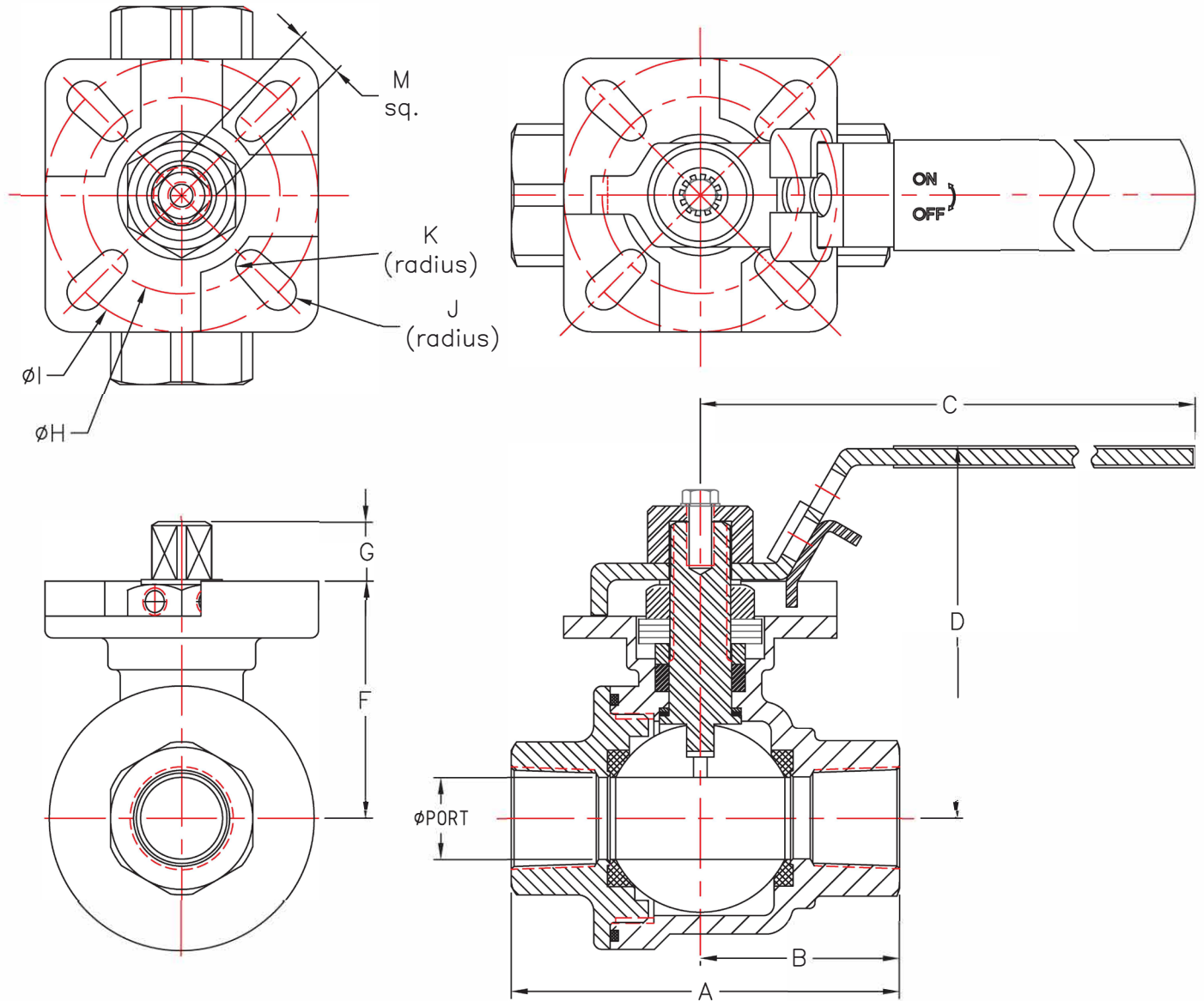
Houston, TX

*Mounting Bracket Must be Used for High Temperature (>180 F) and Steam Applications

** Valve is rated to 1500 CWP due to seat material. Body is marked 2000 CWP.

Series 12 DIR-ACT™ DIRECT MOUNT 2-PIECE BALL VALVE

Dimensions



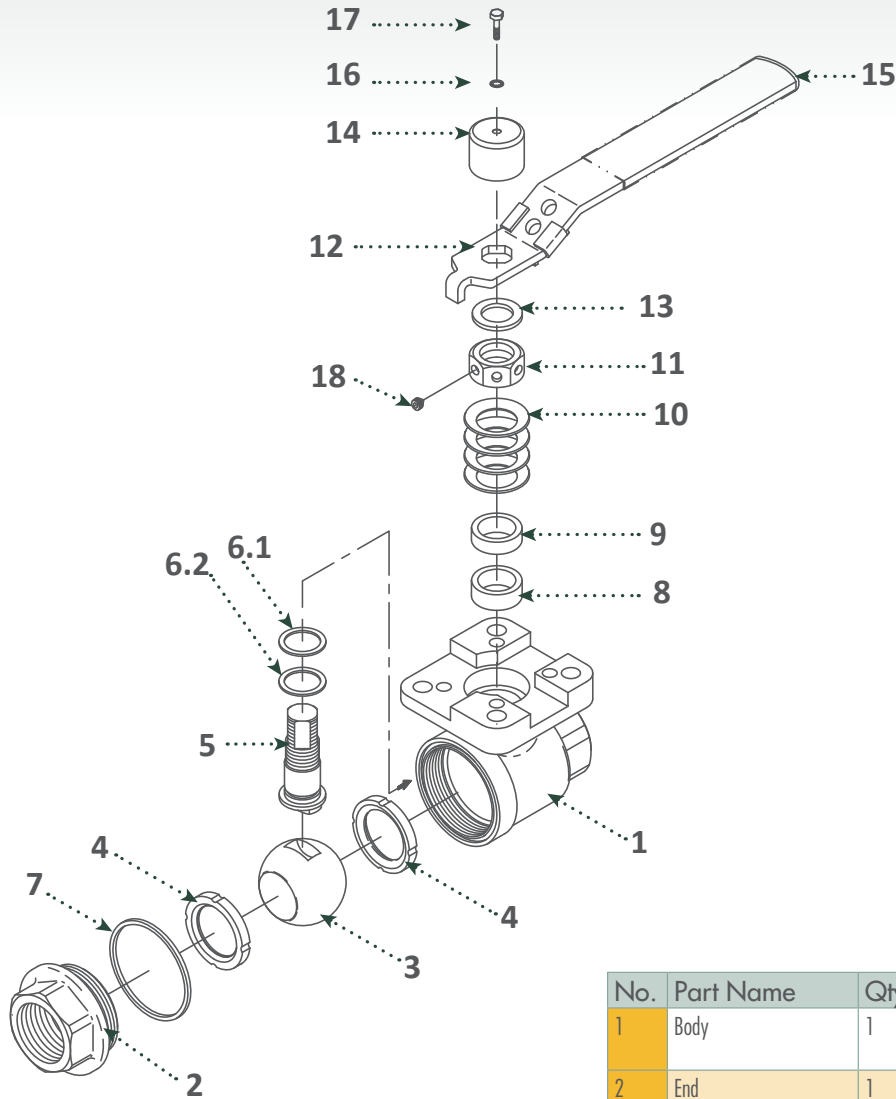
Dimensions (Inches)

Size	Port	A	B	C ϕ	D	F	G	ϕ H	ϕ l	J	K	M
1/4	0.46	2.80	1.44	4.92	2.83	1.71	0.37	F03 (1.42)*	F05 (1.97)	0.130	0.110	0.358
3/8	0.50	2.80	1.44	4.92	2.83	1.71	0.37	F03 (1.42)*	F05 (1.97)	0.130	0.110	0.358
1/2	0.59	2.80	1.44	4.92	2.83	1.71	0.37	F03 (1.42)*	F05 (1.97)	0.130	0.110	0.358
3/4	0.79	3.15	1.55	4.92	2.85	1.85	0.42	F04 (1.65)	F05 (1.97)	0.138	0.138	0.350
1	1.00	3.42	1.69	7.48	3.37	2.20	0.45	F05 (1.97)	F07 (2.76)	0.177	0.138	0.350
1-1/4	1.26	4.15	2.01	7.48	3.60	2.60	0.55	F05 (1.97)	F07 (2.76)	0.177	0.138	0.429
1-1/2	1.50	4.46	2.23	7.48	3.84	2.81	0.56	F05 (1.97)	F07 (2.76)	0.177	0.138	0.429
2	2.00	5.39	2.70	7.48	4.19	3.17	0.55	F05 (1.97)	F07 (2.76)	0.177	0.138	0.429

*Bolt slots accept F03, F04 and F05

Series 12 DIR-ACT™ DIRECT MOUNT 2-PIECE BALL VALVE

Parts & Materials



No.	Part Name	Qty	Material
1	Body	1	Carbon Steel ASTM A216 WCB or 316 Stainless Steel ASTM A351 CF8M
2	End	1	Carbon Steel ASTM A216 WCB or 316 Stainless Steel ASTM A351 CF8M
3	Ball	1	316 Stainless Steel
4	Seat	2	TFM
5	Stem	1	316 Stainless Steel
6.1	Thrust Bearing - Top	1	PEEK
6.2	Thrust Bearing - Bottom	1	Nova
7	Body Seal	2	PTFE
8	Stem Packing	1	RTFE
9	Gland Packing	1	300 Series Stainless Steel
10	Belleville Washers	4	300 Series Stainless Steel
11	McNut (Packing Nut)	1	300 Series Stainless Steel
12	Handle	1	300 Series Stainless Steel
13	Handle Washer	1	300 Series Stainless Steel
14	Stem Cover	1	300 Series Stainless Steel
15	Handle Sleeve	1	PVC
16	Lock Washer	1	300 Series Stainless Steel
17	Stem Bolt	1	300 Series Stainless Steel
18	Set Screw	1	300 Series Stainless Steel



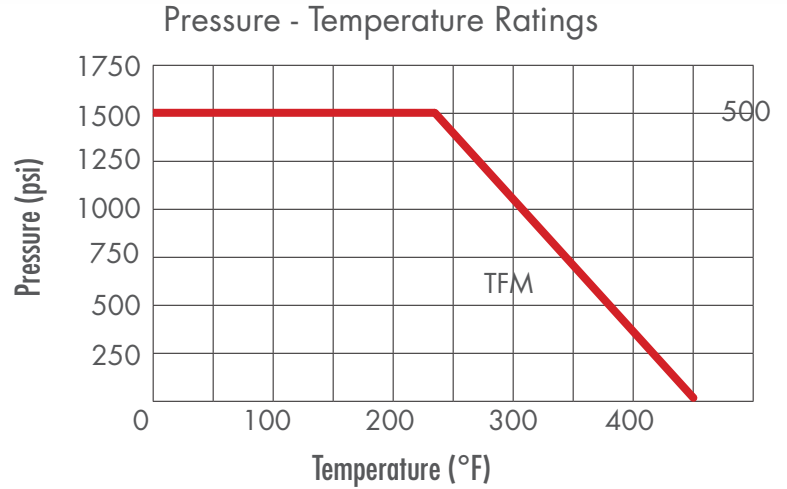
Valves, Automation & Controls

Series 12 DIR-ACT™ DIRECT MOUNT 2-PIECE BALL VALVE

Technical Information

Size	C _v	Break Away* Torque / (in-lbf)	Weight (lbs.)
1/4	8	50	1.6
3/8	8	50	1.6
1/2	38	50	1.4
3/4	71	100	1.6
1	110	140	3.2
1-1/4	230	200	4.6
1-1/2	350	240	6.0
2	600	320	9.0

*Based on clean non-lubricating fluid at room temperature at 1500 psi media pressure..



How to Order

Size	Series	Body		Ball & Stem		End Connection		Seat	
1/4	12	6	316 Stainless Steel	6	316 Stainless Steel	TE	Threaded	M	TFM
3/8		4	Carbon Steel						
1/2									
3/4									
1									
1-1/4									
1-1/2									
2									

Example: 1/4 = 12 = 6 = 6 = TE = M = 1/4"-12-6-6-TE-M