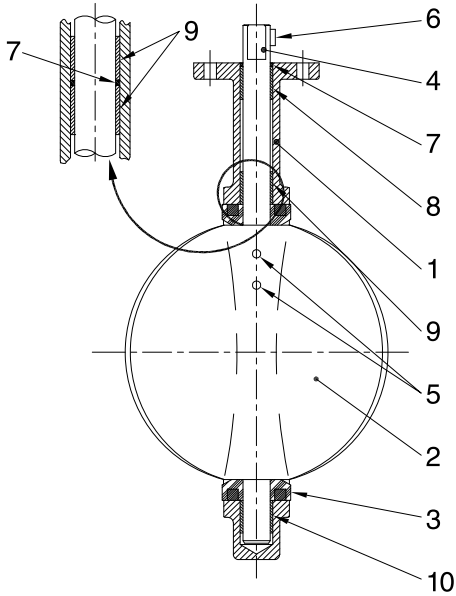


Figure LD-721

150 CWP • Lug Body • Handwheel Gear Operated



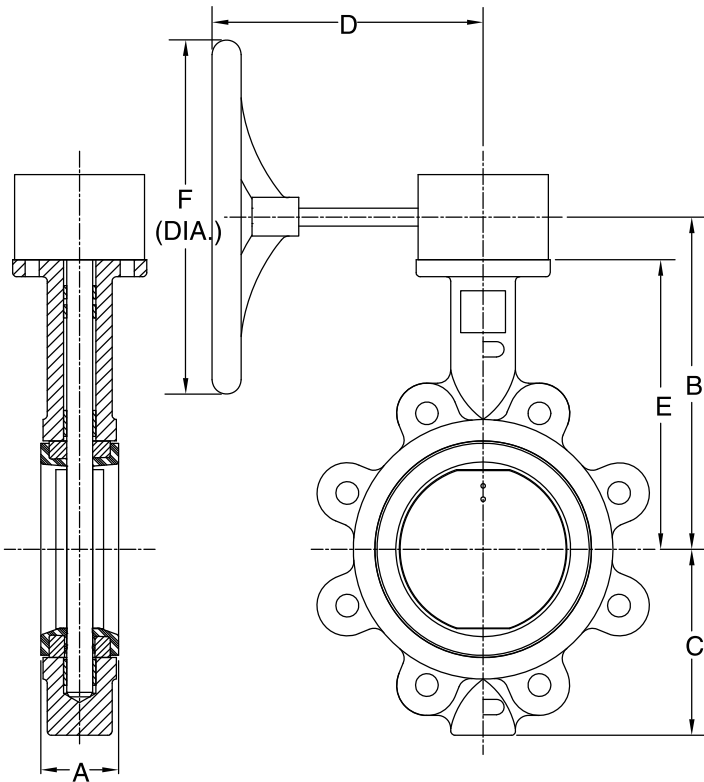
Materials of Construction

No.	Description	Material	ASTM Spec.
1	Body	Ductile Iron	A-536 Gr. 65-45-12
2	Disc	Ductile Iron Stainless Steel Aluminum Bronze	A-536 Gr. 65-45-12 A-351 Gr. CF8M B-148 Alloy C95400
*3	Seat	Buna-N EPDM, Viton®	
4	Shaft	316 Stainless Steel 416 Stainless Steel	A-276 Type 316 A-582 Type 416
*5	Taper Pin	300 Series Stainless	
6	Key	Carbon Steel	A-575 AISI 1018
*7	O-Ring	Buna-N	
8	Bushing	PTFE	
9	Bushing	PTFE	
10	Bushing	PTFE	

* Recommended spare parts.

Notes:

1. Line flange dimensions comply with ASME B16.5.
2. MSS SP-67 Type I.
3. Order parts by item number, valve size and figure number.



Dimensions and Weights

Size	Wt.	A*	B	C	D	E	F
14	173	3.12	16.00	10.50	9.04	14.50	12.00
	(78.49)	(79)	(406)	(266)	(226)	(368)	(305)
16	230	3.50	18.00	12.88	11.08	15.75	18.00
	(104.35)	(89)	(457)	(327)	(277)	(400)	(457)
18	265	4.25	18.88	13.63	11.08	16.62	18.00
	(120.23)	(108)	(480)	(346)	(277)	(422)	(457)
20	431	5.25	22.12	15.13	12.6	18.88	18.00
	(195.52)	(133)	(562)	(384)	(321)	(479)	(457)
24	680	6.12	25.38	18.37	13.2	22.12	18.00
	(308.50)	(155)	(645)	(466)	(335)	(562)	(457)
30	1150	6.75	28.06	24.75	14.3	25.50	18.00
	(521.67)	(171)	(649)	(628)	(362)	(648)	(457)

Inches (millimeters) - Pounds (kilograms)

*A dimension is listed with elastomer in relaxed condition.