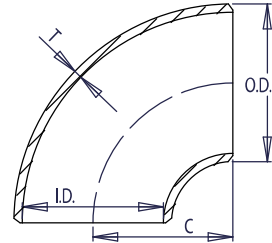


Pipe Size	Outside Diameter	Inside Diameter	Wall Thickness	Center to End	Pipe Schedule Number	Approx. Weight in Pounds
	O.D.	I.D.	T	C		
1	1.32	1.049	0.133	1.00	40	0.30
1 ¼	1.66	1.380	0.140	1.25	40	0.40
1 ½	1.90	1.610	0.145	1.50	40	0.50
2	2.38	2.067	0.154	2.00	40	1.00
2 ½	2.88	2.469	0.203	2.50	40	2.00
3	3.50	3.068	0.216	3.00	40	3.00
3 ½	4.00	3.548	0.226	3.50	40	4.30
4	4.50	4.026	0.237	4.00	40	6.10
5	5.56	5.047	0.258	5.00	40	9.70
6	6.62	6.065	0.280	6.00	40	16.70
8	8.62	7.981	0.322	8.00	40	32.40
10	10.75	10.020	0.365	10.00	40	56.30
12	12.75	12.000	0.375	12.00	*	79.40
14	14.00	13.250	0.375	14.00	30	104.00
16	16.00	15.250	0.375	16.00	30	129.00
18	18.00	17.250	0.375	18.00	*	163.00
20	20.00	19.250	0.375	20.00	20	210.00
24	24.00	23.250	0.375	24.00	20	297.00
❖ 30	30.00	29.250	0.375	30.00	*	470.00
❖ 36	36.00	35.250	0.375	36.00	*	692.00
❖ 42	42.00	41.250	0.375	42.00	*	967.00
❖ 48	48.00	47.250	0.375	48.00	*	1340.00

SHORT RADIUS SCHEDULE STD



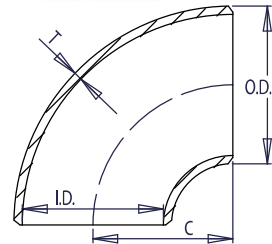
WELDBEND NOTES

1. Conforms to ASME B16.9 & ASTM A234 WPB.
 2. All dimensions are in inches.
 3. For bevel detail see page 107.
 4. For dimensional tolerances see page 108.
 5. For sizes larger than 48" please call.
 6. All weights are in pounds and approximated or estimated.
- * This size and thickness does not correspond to any pipe schedule number.
 ❖ In accordance with B16.9. Special Fittings paragraph 4.4.2.

FITTINGS

Pipe Size	Outside Diameter	Inside Diameter	Wall Thickness	Center to End	Pipe Schedule Number	Approx. Weight in Pounds
	O.D.	I.D.	T	C		
1	1.32	0.962	0.179	1.00	80	0.30
1 ¼	1.66	1.278	0.191	1.25	80	0.60
1 ½	1.90	1.500	0.200	1.50	80	0.80
2	2.38	1.939	0.218	2.00	80	1.50
2 ½	2.88	2.323	0.276	2.50	80	2.60
3	3.50	2.900	0.300	3.00	80	3.80
3 ½	4.00	3.364	0.318	3.50	80	5.40
4	4.50	3.826	0.337	4.00	80	7.60
5	5.56	4.813	0.375	5.00	80	13.80
6	6.62	5.761	0.432	6.00	80	22.80
8	8.62	7.625	0.500	8.00	80	47.30
10	10.75	9.750	0.500	10.00	60	71.00
12	12.75	11.750	0.500	12.00	*	104.00
14	14.00	13.000	0.500	14.00	*	137.00
16	16.00	15.000	0.500	16.00	40	171.00
18	18.00	17.000	0.500	18.00	*	214.00
20	20.00	19.000	0.500	20.00	30	277.00
24	24.00	23.000	0.500	24.00	*	390.00
❖ 30	30.00	29.000	0.500	30.00	20	632.70
❖ 36	36.00	35.000	0.500	36.00	20	913.00
❖ 42	42.00	41.000	0.500	42.00	*	1300.00
❖ 48	48.00	47.000	0.500	48.00	*	1675.00

SHORT RADIUS SCHEDULE XS



WELDBEND NOTES

1. Conforms to ASME B16.9 & ASTM A234 WPB.
 2. All dimensions are in inches.
 3. For bevel detail see page 107.
 4. For dimensional tolerances see page 108.
 5. For sizes larger than 48" please call.
 6. All weights are in pounds and approximated or estimated.
- * This size and thickness does not correspond to any pipe schedule number.
 ❖ In accordance with B16.9. Special Fittings paragraph 4.4.2.