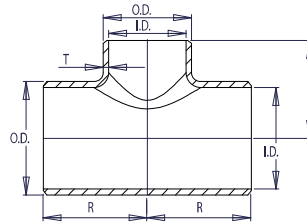


REDUCING TEES



SCHEDULE STD



WELDBEND NOTES

1. Conforms to ASME B16.9 & ASTM A234 WPB.
 2. All dimensions are in inches.
 3. For bevel detail see page 107.
 4. For dimensional tolerances see page 108.
 5. For sizes larger than 48" please call.
 6. All weights are in pounds and approximated or estimated.
- * This size and thickness does not correspond to any pipe schedule number.
 ♦ In accordance with B16.9. Special Fittings paragraph 4.4.2.

FITTINGS

| Pipe Size | DIMENSIONS OF RUN | | | | DIMENSIONS OF BRANCH | | | | Pipe Schedule Number | Approx. Weight in Pounds |
|-----------|-------------------|-----------------|----------------|---------------|----------------------|-----------------|----------------|---------------|----------------------|--------------------------|
| | Outside Diameter | Inside Diameter | Wall Thickness | Center to End | Outside Diameter | Inside Diameter | Wall Thickness | Center to End | | |
| | O.D. | I.D. | T | R | O.D. | I.D. | T | B | | |
| ¾ x ½ | 1.05 | 0.824 | 0.113 | 1.12 | 0.84 | 0.622 | 0.109 | 1.12 | 40 | 0.41 |
| 1 x ¾ | 1.32 | 1.049 | 0.133 | 1.50 | 1.05 | 0.824 | 0.113 | 1.50 | 40 | 0.81 |
| 1 x ½ | 1.32 | 1.049 | 0.133 | 1.50 | 0.84 | 0.622 | 0.109 | 1.50 | 40 | 0.78 |
| 1 ¼ x 1 | 1.66 | 1.380 | 0.140 | 1.88 | 1.32 | 1.049 | 0.133 | 1.88 | 40 | 1.30 |
| 1 ¼ x ¾ | 1.66 | 1.380 | 0.140 | 1.88 | 1.05 | 0.824 | 0.113 | 1.88 | 40 | 1.30 |
| 1 ¼ x ½ | 1.66 | 1.380 | 0.140 | 1.88 | 0.84 | 0.622 | 0.109 | 1.88 | 40 | 1.30 |
| 1 ½ x 1 ¼ | 1.90 | 1.610 | 0.145 | 2.25 | 1.66 | 1.380 | 0.140 | 2.25 | 40 | 2.00 |
| 1 ½ x 1 | 1.90 | 1.610 | 0.145 | 2.25 | 1.32 | 1.049 | 0.133 | 2.25 | 40 | 1.90 |
| 1 ½ x ¾ | 1.90 | 1.610 | 0.145 | 2.25 | 1.05 | 0.824 | 0.113 | 2.25 | 40 | 1.80 |
| 1 ½ x ½ | 1.90 | 1.610 | 0.145 | 2.25 | 0.84 | 0.622 | 0.109 | 2.25 | 40 | 1.80 |
| 2 x 1 ½ | 2.38 | 2.067 | 0.154 | 2.50 | 1.90 | 1.610 | 0.145 | 2.38 | 40 | 3.10 |
| 2 x 1 ¼ | 2.38 | 2.067 | 0.154 | 2.50 | 1.66 | 1.380 | 0.140 | 2.25 | 40 | 3.00 |
| 2 x 1 | 2.38 | 2.067 | 0.154 | 2.50 | 1.32 | 1.049 | 0.133 | 2.00 | 40 | 2.80 |
| 2 x ¾ | 2.38 | 2.067 | 0.154 | 2.50 | 1.05 | 0.824 | 0.113 | 1.75 | 40 | 2.50 |
| 2 ½ x 2 | 2.88 | 2.469 | 0.203 | 3.00 | 2.38 | 2.067 | 0.154 | 2.75 | 40 | 5.40 |
| 2 ½ x 1 ½ | 2.88 | 2.469 | 0.203 | 3.00 | 1.90 | 1.610 | 0.145 | 2.62 | 40 | 5.10 |
| 2 ½ x 1 ¼ | 2.88 | 2.469 | 0.203 | 3.00 | 1.66 | 1.380 | 0.140 | 2.50 | 40 | 4.80 |
| 2 ½ x 1 | 2.88 | 2.469 | 0.203 | 3.00 | 1.32 | 1.049 | 0.133 | 2.25 | 40 | 4.60 |
| 3 x 2 ½ | 3.50 | 3.068 | 0.216 | 3.38 | 2.88 | 2.469 | 0.203 | 3.25 | 40 | 7.20 |
| 3 x 2 | 3.50 | 3.068 | 0.216 | 3.38 | 2.38 | 2.067 | 0.154 | 3.00 | 40 | 7.00 |
| 3 x 1 ½ | 3.50 | 3.068 | 0.216 | 3.38 | 1.90 | 1.610 | 0.145 | 2.88 | 40 | 6.80 |
| 3 x 1 ¼ | 3.50 | 3.068 | 0.216 | 3.38 | 1.66 | 1.380 | 0.140 | 2.75 | 40 | 6.60 |
| ♦ 3 x 1 | 3.50 | 3.068 | 0.216 | 3.38 | 1.32 | 1.049 | 0.133 | 2.62 | 40 | 6.50 |
| 3 ½ x 3 | 4.00 | 3.548 | 0.226 | 3.75 | 3.50 | 3.068 | 0.216 | 3.62 | 40 | 9.80 |
| 3 ½ x 2 ½ | 4.00 | 3.548 | 0.226 | 3.75 | 2.88 | 2.474 | 0.203 | 3.50 | 40 | 9.40 |
| 3 ½ x 2 | 4.00 | 3.548 | 0.226 | 3.75 | 2.38 | 2.072 | 0.154 | 3.25 | 40 | 9.20 |
| 3 ½ x 1 ½ | 4.00 | 3.548 | 0.226 | 3.75 | 1.90 | 1.610 | 0.145 | 3.12 | 40 | 8.90 |
| 4 x 3 ½ | 4.50 | 4.026 | 0.237 | 4.12 | 4.00 | 3.548 | 0.226 | 4.00 | 40 | 11.90 |
| 4 x 3 | 4.50 | 4.026 | 0.237 | 4.12 | 3.50 | 3.068 | 0.216 | 3.88 | 40 | 11.60 |
| 4 x 2 ½ | 4.50 | 4.026 | 0.237 | 4.12 | 2.88 | 2.469 | 0.203 | 3.75 | 40 | 11.40 |
| 4 x 2 | 4.50 | 4.026 | 0.237 | 4.12 | 2.38 | 2.067 | 0.154 | 3.50 | 40 | 11.20 |
| 4 x 1 ½ | 4.50 | 4.026 | 0.237 | 4.12 | 1.90 | 1.610 | 0.145 | 3.38 | 40 | 11.20 |
| 5 x 4 | 5.56 | 5.047 | 0.258 | 4.88 | 4.50 | 4.026 | 0.237 | 4.62 | 40 | 20.50 |
| 5 x 3 ½ | 5.56 | 5.047 | 0.258 | 4.88 | 4.00 | 3.548 | 0.226 | 4.50 | 40 | 20.00 |
| 5 x 3 | 5.56 | 5.047 | 0.258 | 4.88 | 3.50 | 3.068 | 0.216 | 4.38 | 40 | 19.40 |
| 5 x 2 ½ | 5.56 | 5.047 | 0.258 | 4.88 | 2.88 | 2.469 | 0.203 | 4.25 | 40 | 19.00 |
| 5 x 2 | 5.56 | 5.047 | 0.258 | 4.88 | 2.38 | 2.067 | 0.154 | 4.12 | 40 | 18.80 |
| 6 x 5 | 6.62 | 6.065 | 0.280 | 5.62 | 5.56 | 5.047 | 0.258 | 5.38 | 40 | 32.00 |
| 6 x 4 | 6.62 | 6.065 | 0.280 | 5.62 | 4.50 | 4.026 | 0.237 | 5.12 | 40 | 30.50 |
| 6 x 3 ½ | 6.62 | 6.065 | 0.280 | 5.62 | 4.00 | 3.548 | 0.226 | 5.00 | 40 | 30.00 |
| 6 x 3 | 6.62 | 6.065 | 0.280 | 5.62 | 3.50 | 3.068 | 0.216 | 4.88 | 40 | 30.00 |
| 6 x 2 ½ | 6.62 | 6.065 | 0.280 | 5.62 | 2.88 | 2.469 | 0.203 | 4.75 | 40 | 29.70 |
| ♦ 6 x 2 | 6.62 | 6.065 | 0.280 | 5.62 | 2.38 | 2.067 | 0.154 | 4.75 | 40 | 29.00 |
| 8 x 6 | 8.62 | 7.981 | 0.322 | 7.00 | 6.62 | 6.065 | 0.280 | 6.62 | 40 | 56.50 |
| 8 x 5 | 8.62 | 7.981 | 0.322 | 7.00 | 5.56 | 5.047 | 0.258 | 6.38 | 40 | 54.00 |
| 8 x 4 | 8.62 | 7.981 | 0.322 | 7.00 | 4.50 | 4.026 | 0.237 | 6.12 | 40 | 53.20 |

FITTINGS

| Pipe Size | DIMENSIONS OF RUN | | | | DIMENSIONS OF BRANCH | | | | Pipe Schedule Number | Approx. Weight in Pounds |
|-----------|-------------------|-----------------|----------------|---------------|----------------------|-----------------|----------------|---------------|----------------------|--------------------------|
| | Outside Diameter | Inside Diameter | Wall Thickness | Center to End | Outside Diameter | Inside Diameter | Wall Thickness | Center to End | | |
| | O.D. | I.D. | T | R | O.D. | I.D. | T | B | | |
| 8 x 3 1/2 | 8.62 | 7.981 | 0.322 | 7.00 | 4.00 | 3.548 | 0.226 | 6.00 | 40 | 53.00 |
| ❖ 8 x 3 | 8.62 | 7.981 | 0.322 | 7.00 | 3.50 | 3.068 | 0.216 | 6.00 | 40 | 52.00 |
| 10 x 8 | 10.75 | 10.020 | 0.365 | 8.50 | 8.62 | 7.981 | 0.322 | 8.00 | 40 | 86.50 |
| 10 x 6 | 10.75 | 10.020 | 0.365 | 8.50 | 6.62 | 6.060 | 0.280 | 7.62 | 40 | 85.90 |
| 10 x 5 | 10.75 | 10.020 | 0.365 | 8.50 | 5.56 | 5.047 | 0.258 | 7.50 | 40 | 82.50 |
| 10 x 4 | 10.75 | 10.020 | 0.365 | 8.50 | 4.50 | 4.026 | 0.237 | 7.25 | 40 | 82.00 |
| ❖ 10 x 3 | 10.75 | 10.020 | 0.365 | 8.50 | 3.50 | 3.068 | 0.216 | 7.25 | 40 | 79.00 |
| 12 x 10 | 12.75 | 12.000 | 0.375 | 10.00 | 10.75 | 10.020 | 0.365 | 9.50 | * | 123.00 |
| 12 x 8 | 12.75 | 12.000 | 0.375 | 10.00 | 8.62 | 7.981 | 0.322 | 9.00 | * | 120.00 |
| 12 x 6 | 12.75 | 12.000 | 0.375 | 10.00 | 6.62 | 6.060 | 0.280 | 8.62 | * | 118.00 |
| 12 x 5 | 12.75 | 12.000 | 0.375 | 10.00 | 5.56 | 5.047 | 0.258 | 8.50 | * | 117.00 |
| ❖ 12 x 4 | 12.75 | 12.000 | 0.375 | 10.00 | 4.50 | 4.026 | 0.237 | 8.50 | * | 112.00 |
| 14 x 12 | 14.00 | 13.250 | 0.375 | 11.00 | 12.75 | 12.000 | 0.375 | 10.62 | * | 151.00 |
| 14 x 10 | 14.00 | 13.250 | 0.375 | 11.00 | 10.75 | 10.020 | 0.365 | 10.12 | * | 148.00 |
| 14 x 8 | 14.00 | 13.250 | 0.375 | 11.00 | 8.62 | 7.981 | 0.322 | 9.75 | * | 146.00 |
| 14 x 6 | 14.00 | 13.250 | 0.375 | 11.00 | 6.62 | 6.065 | 0.280 | 9.38 | * | 145.00 |
| 16 x 14 | 16.00 | 15.250 | 0.375 | 12.00 | 14.00 | 13.250 | 0.375 | 12.00 | * | 221.00 |
| 16 x 12 | 16.00 | 15.250 | 0.375 | 12.00 | 12.75 | 12.000 | 0.375 | 11.62 | * | 213.00 |
| 16 x 10 | 16.00 | 15.250 | 0.375 | 12.00 | 10.75 | 10.020 | 0.365 | 11.12 | * | 197.00 |
| 16 x 8 | 16.00 | 15.250 | 0.375 | 12.00 | 8.62 | 7.981 | 0.322 | 10.75 | * | 190.00 |
| 16 x 6 | 16.00 | 15.250 | 0.375 | 12.00 | 6.62 | 6.060 | 0.280 | 10.38 | * | 180.00 |
| 18 x 16 | 18.00 | 17.250 | 0.375 | 13.50 | 16.00 | 15.250 | 0.375 | 13.00 | * | 262.00 |
| 18 x 14 | 18.00 | 17.250 | 0.375 | 13.50 | 14.00 | 13.250 | 0.375 | 13.00 | * | 248.00 |
| 18 x 12 | 18.00 | 17.250 | 0.375 | 13.50 | 12.75 | 12.000 | 0.375 | 12.62 | * | 241.00 |
| 18 x 10 | 18.00 | 17.250 | 0.375 | 13.50 | 10.75 | 10.020 | 0.365 | 12.12 | * | 229.00 |
| 18 x 8 | 18.00 | 17.250 | 0.375 | 13.50 | 8.62 | 7.981 | 0.322 | 11.75 | * | 216.00 |
| 20 x 18 | 20.00 | 19.250 | 0.375 | 15.00 | 18.00 | 17.250 | 0.375 | 14.50 | * | 352.00 |
| 20 x 16 | 20.00 | 19.250 | 0.375 | 15.00 | 16.00 | 15.250 | 0.375 | 14.00 | * | 339.00 |
| 20 x 14 | 20.00 | 19.250 | 0.375 | 15.00 | 14.00 | 13.250 | 0.375 | 14.00 | * | 327.00 |
| 20 x 12 | 20.00 | 19.250 | 0.375 | 15.00 | 12.75 | 12.000 | 0.375 | 13.62 | * | 315.00 |
| 20 x 10 | 20.00 | 19.250 | 0.375 | 15.00 | 10.75 | 10.020 | 0.365 | 13.12 | * | 305.00 |
| 20 x 8 | 20.00 | 19.250 | 0.375 | 15.00 | 8.62 | 7.976 | 0.322 | 12.75 | * | 293.00 |
| 24 x 20 | 24.00 | 23.250 | 0.375 | 17.00 | 20.00 | 19.250 | 0.375 | 17.00 | * | 500.00 |
| 24 x 18 | 24.00 | 23.250 | 0.375 | 17.00 | 18.00 | 17.250 | 0.375 | 16.50 | * | 487.00 |
| 24 x 16 | 24.00 | 23.250 | 0.375 | 17.00 | 16.00 | 15.250 | 0.375 | 16.00 | * | 475.00 |
| 24 x 14 | 24.00 | 23.250 | 0.375 | 17.00 | 14.00 | 13.250 | 0.375 | 16.00 | * | 465.00 |
| 24 x 12 | 24.00 | 23.250 | 0.375 | 17.00 | 12.75 | 12.000 | 0.375 | 15.62 | * | 450.00 |
| 24 x 10 | 24.00 | 23.250 | 0.375 | 17.00 | 10.75 | 10.020 | 0.365 | 15.12 | * | 447.00 |
| 30 x 24 | 30.00 | 29.250 | 0.375 | 22.00 | 24.00 | 23.250 | 0.375 | 21.00 | * | 795.00 |
| 30 x 20 | 30.00 | 29.250 | 0.375 | 22.00 | 20.00 | 19.250 | 0.375 | 20.00 | * | 749.00 |
| 30 x 18 | 30.00 | 29.250 | 0.375 | 22.00 | 18.00 | 17.250 | 0.375 | 19.50 | * | 727.00 |
| 30 x 16 | 30.00 | 29.250 | 0.375 | 22.00 | 16.00 | 15.250 | 0.375 | 19.00 | * | 715.00 |
| 36 x 30 | 36.00 | 35.250 | 0.375 | 26.50 | 30.00 | 29.250 | 0.375 | 25.00 | * | 1207.00 |
| 36 x 24 | 36.00 | 35.250 | 0.375 | 26.50 | 24.00 | 23.250 | 0.375 | 24.00 | * | 1129.00 |
| 36 x 20 | 36.00 | 35.250 | 0.375 | 26.50 | 20.00 | 19.250 | 0.375 | 23.00 | * | 1072.00 |
| 36 x 18 | 36.00 | 35.250 | 0.375 | 26.50 | 18.00 | 17.250 | 0.375 | 22.50 | * | 1136.00 |
| 42 x 36 | 42.00 | 41.250 | 0.375 | 30.00 | 36.00 | 35.250 | 0.375 | 28.00 | * | 1415.00 |
| 42 x 30 | 42.00 | 41.250 | 0.375 | 30.00 | 30.00 | 29.250 | 0.375 | 28.00 | * | 1327.00 |
| 42 x 24 | 42.00 | 41.250 | 0.375 | 30.00 | 24.00 | 23.250 | 0.375 | 26.00 | * | 1248.00 |
| 42 x 20 | 42.00 | 41.250 | 0.375 | 30.00 | 20.00 | 19.250 | 0.375 | 26.00 | * | 1200.00 |
| 48 x 42 | 48.00 | 47.250 | 0.375 | 35.00 | 42.00 | 41.250 | 0.375 | 32.00 | * | 2207.00 |
| 48 x 36 | 48.00 | 47.250 | 0.375 | 35.00 | 36.00 | 35.250 | 0.375 | 31.00 | * | 2127.00 |
| 48 x 30 | 48.00 | 47.250 | 0.375 | 35.00 | 30.00 | 29.250 | 0.375 | 30.00 | * | 2048.00 |
| 48 x 24 | 48.00 | 47.250 | 0.375 | 35.00 | 24.00 | 23.250 | 0.375 | 29.00 | * | 1900.00 |